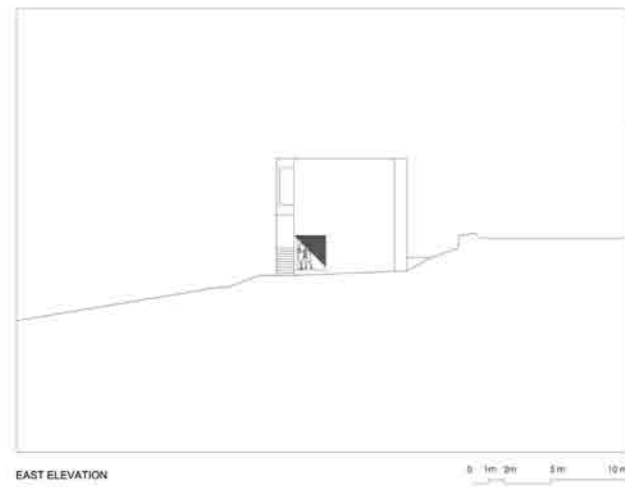


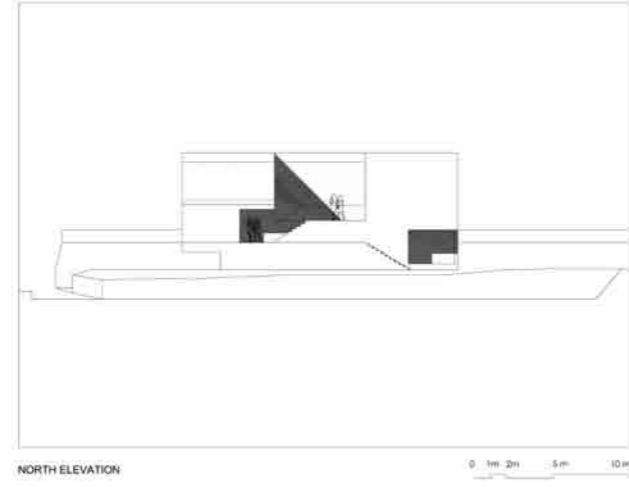
HOUSE IN LUMINO



EAST ELEVATION 0 1m 2m 5m 10m

HOUSE IN LUMINO
TICINO - SWITZERLAND

DAVIDE MACULLO ARCHITECTS



NORTH ELEVATION 0 1m 2m 5m 10m

HOUSE IN LUMINO
TICINO - SWITZERLAND

DAVIDE MACULLO ARCHITECTS

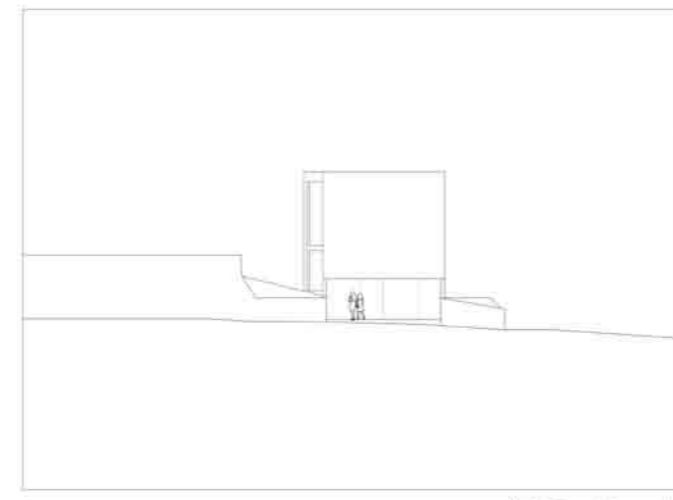
Architects: Davide Macullo Architects with Marco Strozzi **Interior:** Davide Macullo, Marco Strozzi
Area: 133m² **Photography:** Enrico Cano, Como

Located in the Swiss Alpine village of Lumino, just north of Bellinzona, this house stands as a monolithic element, quietly complementing and echoing its context. The surrounding area is characterised by traditional stone built houses, many of which date back centuries and are marked by their use of this single construction material. The new house is intended as a relevant response to and contemporary interpretation of the vernacular; its exposed reinforced concrete form recalls the revered strength and resonates the presence of these old stone houses. Sitting on the edge of the old village, the house acts as a sort of bastion between the old core and the modern residential expansion.

In addition to the local scale references and material cues siphoned from the physical context, the concept and approach to the project was further influenced by the clients' expressed desire for a minimalist aesthetic, both internally and externally. As such, the quality of the spaces in the house would be defined explicitly by the architecture and not by objects placed within it. The idea of the 'minimalist monolith' was adopted as the conceptual generator of the project and became a principle applied to all elements of the both the functional and construction programme, from the foundations up to the smallest finishing details.

The geometry of the plan is generated by two shifted parallelepipeds and follows the fall of the site. The typology created by this staggered geometry underlies both the peculiarities of the landscape while also offering each of the levels a direct relationship with the surrounding gardens. The double system of vertical connections, one internal and one external, relates all the spaces of the house in a spiral movement and is in a constant play with its new inhabitants' perception of time and scale. What is interesting about the house is the ability of the spaces to expand and extend into the landscape, allowing the external become part of the composition. While the individual spaces may be defined geometrically, each space flows into the next and continues to the external.

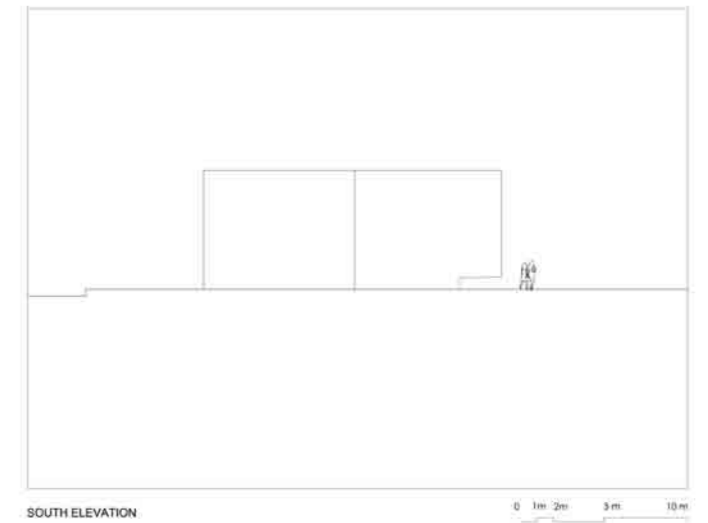
Excavations into the ground rock were kept to a minimum, with only the service spaces placed underground (-1.4m). Vehicle and pedestrian access is from street level (+0.0m). Half a level up from the entrance hall are two bedrooms, both with direct access onto a terrace(+1.4m). On the next floor (+2.8m) is the master suite, again with its own terrace and access to the garden below. Continuing up the house, we arrive into the dining and kitchen space which opens onto the central south facing loggia (+4.2m), with access to the terraces below. This central loggia, which affords panoramic views over the surrounding rooftops, may also be covered with a hydraulic roof when required. The living space on the top floor overlooks and has access down to the loggia below.



WEST ELEVATION 0 1m 2m 5m 10m

HOUSE IN LUMINO
TICINO - SWITZERLAND

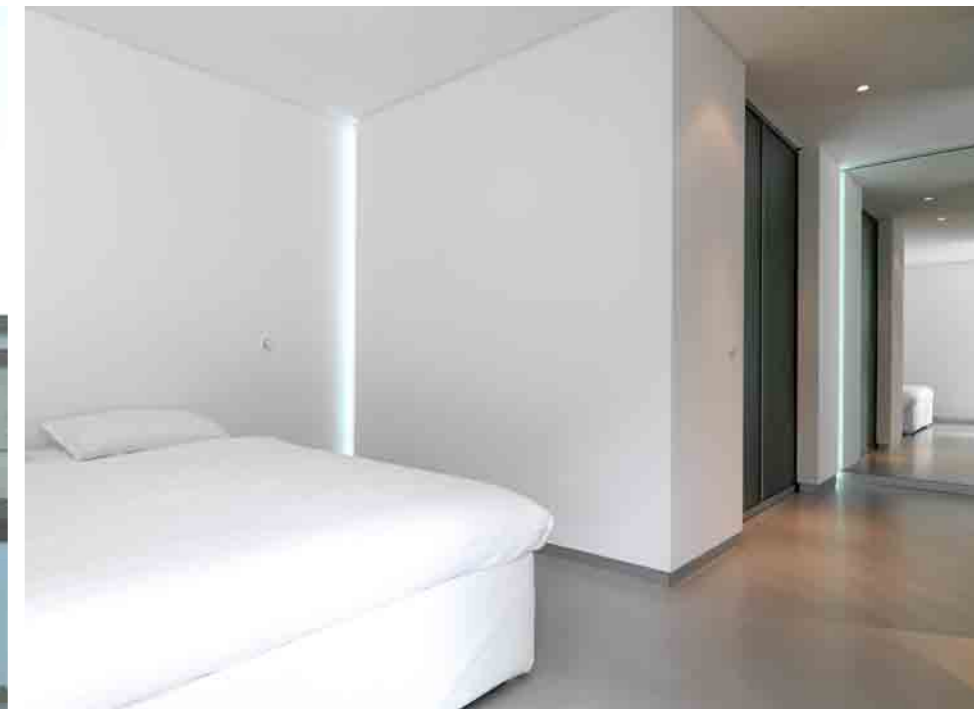
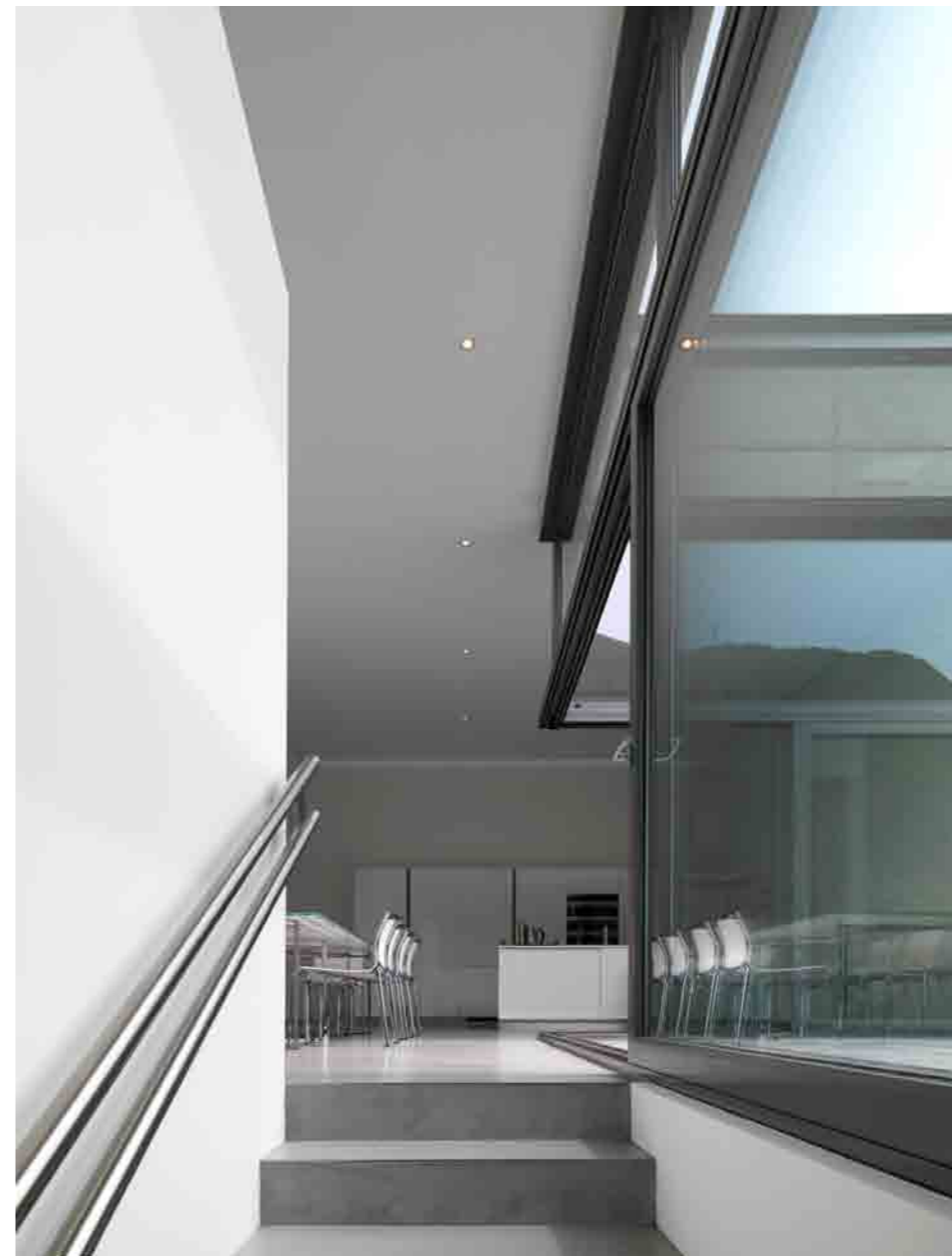
DAVIDE MACULLO ARCHITECTS



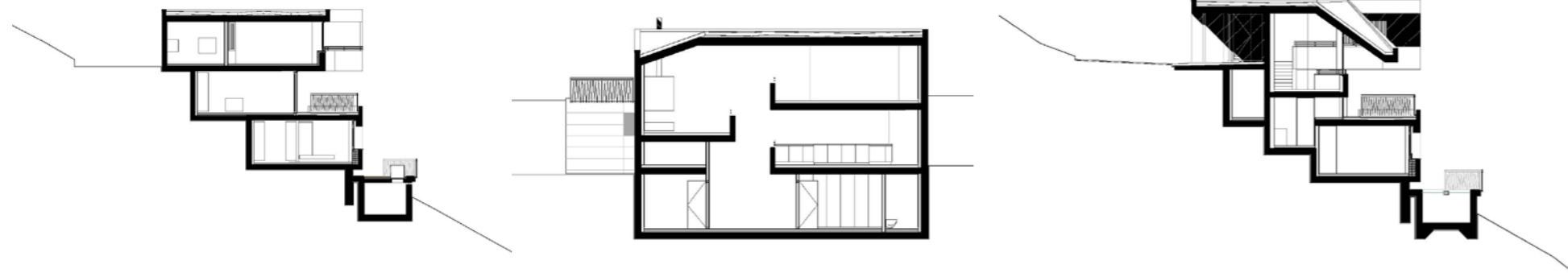
SOUTH ELEVATION 0 1m 2m 5m 10m

HOUSE IN LUMINO
TICINO - SWITZERLAND

DAVIDE MACULLO ARCHITECTS



HOUSE IN CANOBBIO



Architects: Davide Macullo Architects with Marco Strozzi
Interior: Davide Macullo, Marco Strozzi **Engineer:** Franco Semini
Built Area: 700m² **Location:** Lugano, Ticino, Switzerland

Nestled on the Alpine slopes north of Lugano, this house is characterised by a volumetric architecture that emerges from the terrain and follows the natural contour of the land. Its constructed volumes embrace the land in an organic and fluent sequence of spaces, each relating to each other and to the surrounding landscape. In order to communicate an identity and a language to the inhabitants, the project has a strong and precise form, its clearly identifiable geometric structure delimits an organised development of spaces. Carved in a clear square geometry, the spaces meet the slope and extend in a spiral, fluent movement that continuously changes the perception of the space and its relationship to the exterior, offering striking panoramic views across the hinterland and to Lake Lugano.

The house, sited on a 30 degree south facing slope, is the last plot of buildable land before meeting the limits of the encroaching adjacent woodland. The strong angular forms of the house mean that it becomes a marker, announcing the end of the urbanised zone and the beginning of the adjacent wood. The three main storeys of the house have been set on the plot at shifted levels in order to meet the correspondent level of the existing site. This offers a direct relation to the outside from all parts of the house at all levels. The aim of the project is to ensure a visual continuity between the internal and external spaces but moreover, to extend the space beyond its physical boundaries and into the surrounding landscape, 'borrowing' the landscape and projecting the idea of space beyond its material limits.

The succession of spaces and play of perception in the house are ideas derived from those principles of the Japanese garden. By their design and their nature, Japanese gardens offer varying levels of awareness of and responsiveness to space by offering an experiential sequence of different sceneries. As in the gardens, the organisation of the spaces in the house is condensed yet continuous and is intended to take the experience of being in the house beyond the rooted and enclosed domestic scale. In addition, the house also works on both an intimate and vast scale. The clients desire for a shell-like home has been met; the house is very private, protected and not overlooked, however the generated form and volume of the house also creates an open, generous outlook, embracing its setting and taking quiet ownership of its prospect.

