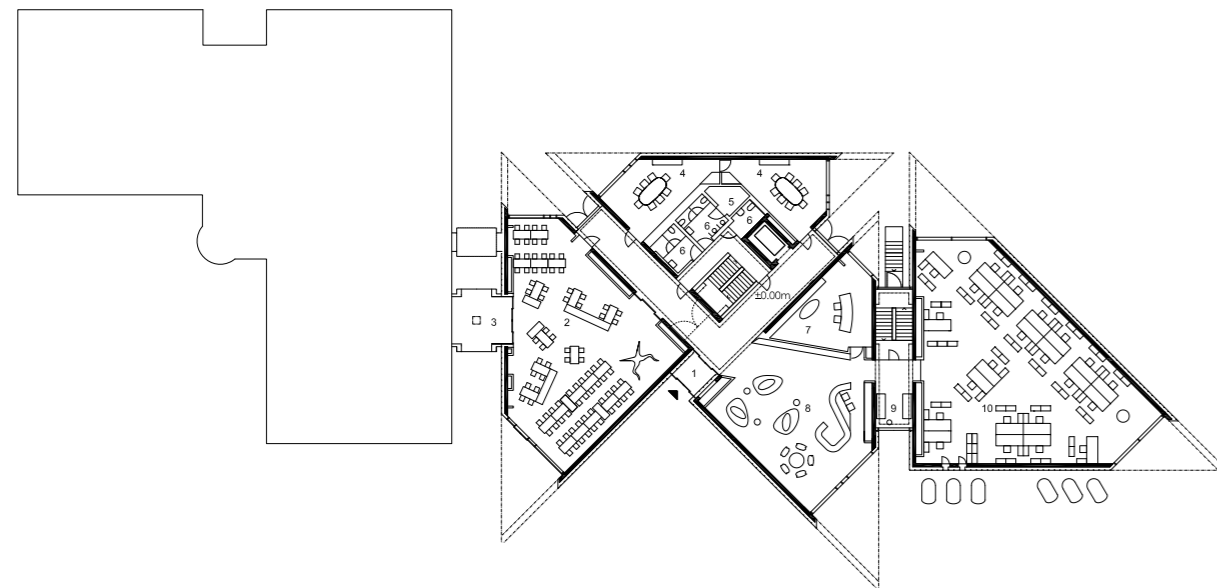


JANSEN CAMPUS

The imposing pinnacles of the Swiss mountains here, the no less imposing pinnacles of the campus there. What a stunning overall picture.



Architect | Davide Macullo Architects
Address | Industriestrasse 34 9463, Oberriet, Switzerland
Client | Jansen AG
Industry | steel tubes manufacturers, steel systems, plastic products
Gross floor area | 1,100 m²
Completion | 2012
Number of employees | 900



338 m² creative spaces
314 m² individual offices
708 m² open-plan offices
380 m² conference rooms
175 m² restaurant

The new Jansen Campus lies in the village of Oberriet in the Rhine valley, one of Switzerland's most industrialized areas. The motivation behind the construction of the new building was to create a space that would have a positive and productive effect on creativity. The internal landscape is articulated as a fluid space, almost as if it were formed by an extension of the urban streets of the village, a system of solids and voids expanding in all directions. The façade is clad in a dark perforated zinc mesh. In order to allow for the fluid flow of daily working life, spaces intended for collective use have been placed adjacent to the main lifts and stair, while the more intimate working spaces lie further along from this circulation. Currently the spaces are organized about a three-dimensional grid that corresponds to the company's functional structure.



