



↑ | Façade, clad in a dark perforated zinc mesh
→ | Night view, pool serves as rainwater collector

Jansen Campus

Oberriet

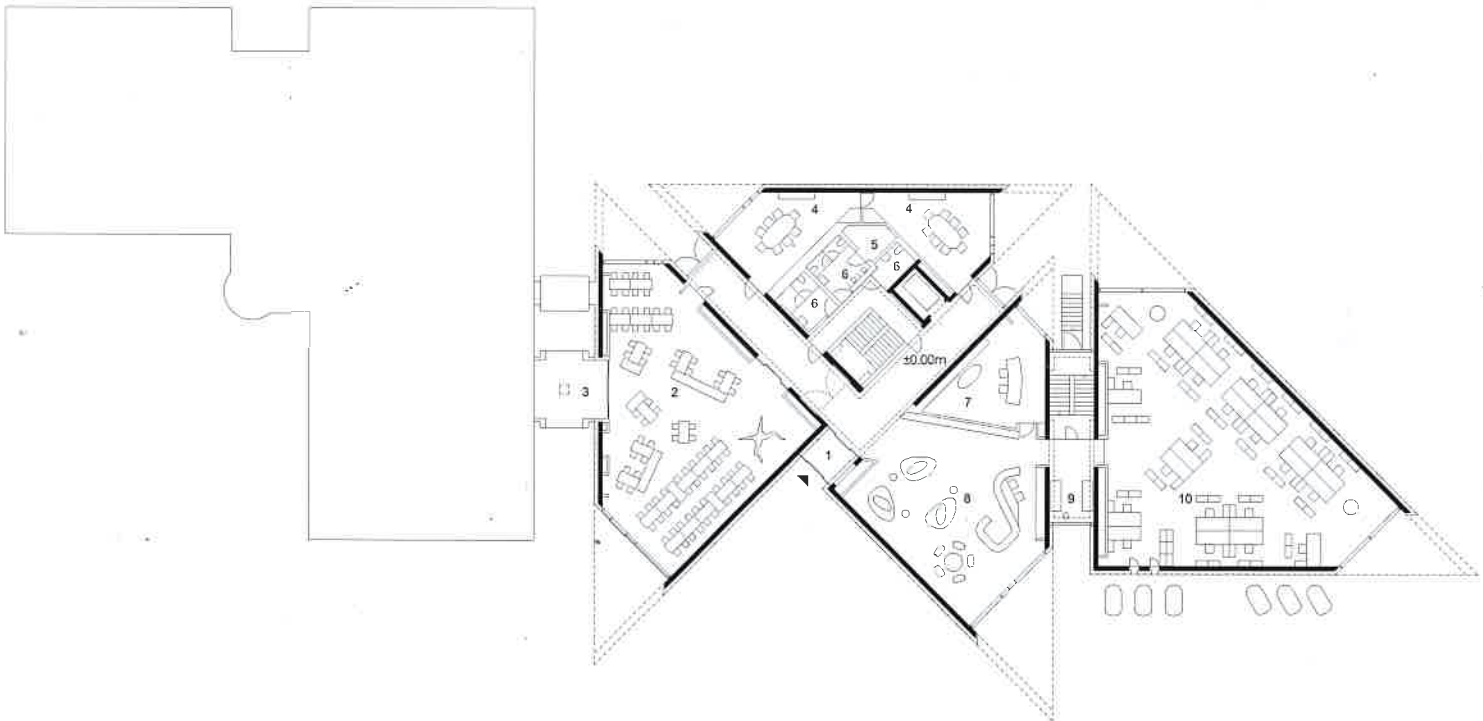
The new Jansen Campus lies in the village of Oberriet in the Rhine valley, one of the most industrialized areas of Switzerland. The motivation behind the construction of the new building was to create a space that would have a positive and productive effect on creativity. The internal landscape is articulated as a fluid space, almost as if it were formed by an extension of the urban streets of the village, a system of solids and voids expanding in all directions. The façade is clad in a dark perforated zinc mesh. In order to allow for the fluid flow of daily working life, spaces intended for collective use have been placed adjacent to the main lifts and stair while the more intimate working spaces lie further along from this circulation. Currently the spaces are organized about a three-dimensional grid that corresponds to the company's functional structure.

Address: Industriestrasse 34, 9463 Oberriet, Switzerland. **Client:** Jansen AG. **Completion:** 2012. **Gross floor area:** 3,300 m². **Structural engineers:** Wälli AG Ingenieure. **Main materials:** reinforced concrete, pre-patinated zinc. **Number of work stations:** 90. **Lighting:** self-regulating floor lamps, ambient light. **Climatization:** heat pump system. **Types of offices:** individual, group, open-plan. **Conference rooms:** 6/110 people. **Restaurants:** 2/120 people. **Other rooms:** lounge, classrooms. **Setting:** urban.





↑ | Reception area, Corian desk and wall with architect's development sketches
↓ | Ground floor plan





↖ | Section

↓ | Interior, spaces flow into each other

