

JANSEN CAMPUS

瑞士詹森园区新总部大楼

Architect: Davide Macullo Architects

Client: Jansen AG

Location: Switzerland

Site Area: 3,705 m²

设计公司: Davide Macullo Architects

客户: Jansen AG

地点: 瑞士

占地面积: 3,705 m²

SHAPE ANALYSIS 造型分析

PICTOGRAPHIC SHAPE

The new geometry of the Jansen Campus has been generated by this complexity of the 'games of planes'. It is typified by a multitude of different sized inclined planes, sloping in different directions, that manage to achieve a remarkable visual and spatial balance.

象形造型

詹森园区的新几何体量以“平面的游戏”为最大亮点。多种不同大小的斜面向不同的方向倾斜，打造出视觉和空间之间不可思议的平衡。



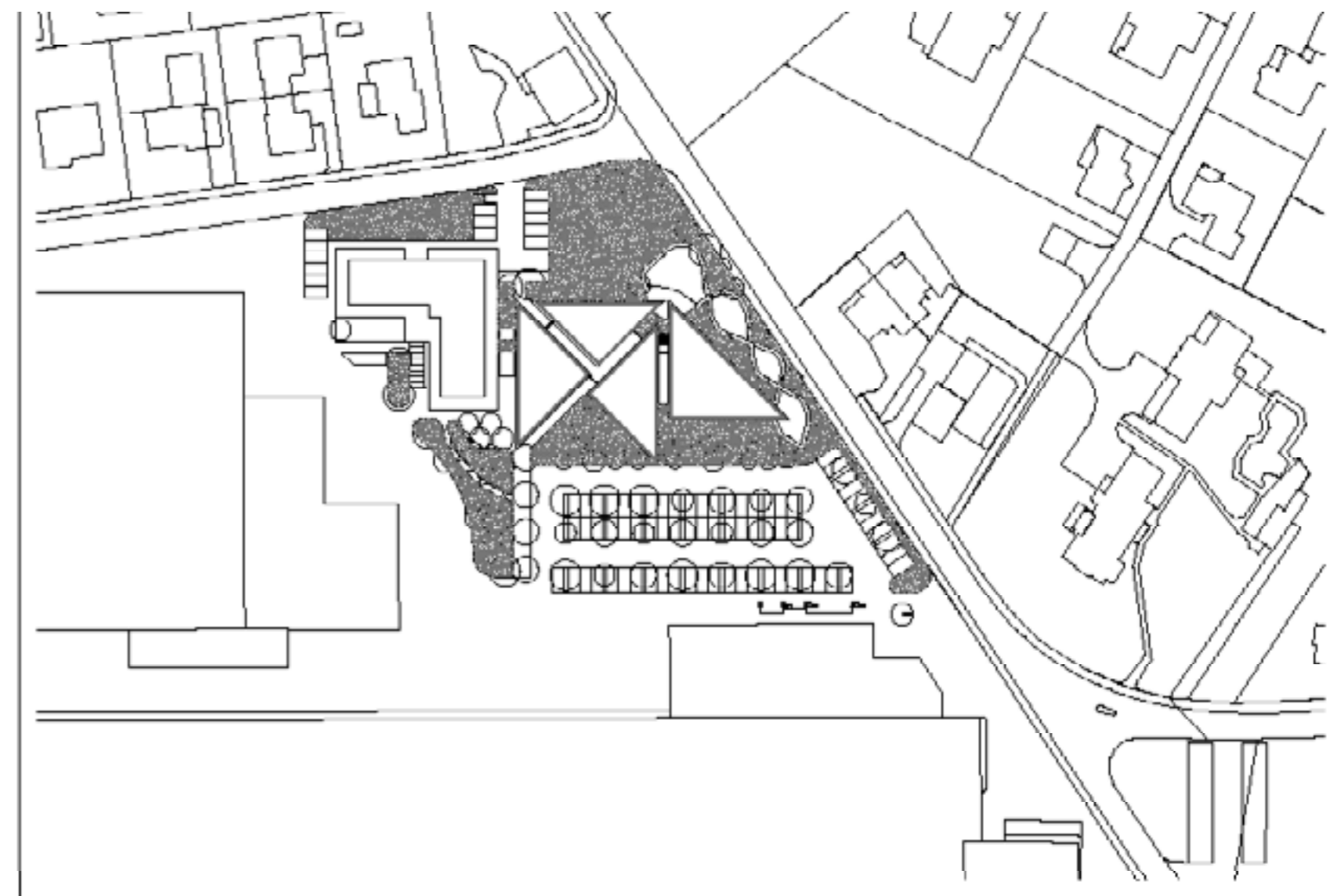


The building, a striking new addition to the skyline, is the link between the industrial area and the old town and takes its triangular forms from the traditional pitched roofs of Oberriet. The project integrates innovative technologies and includes new details and materials not yet used in architecture- the façade system for example, structural glazing details (by Jansen AG)

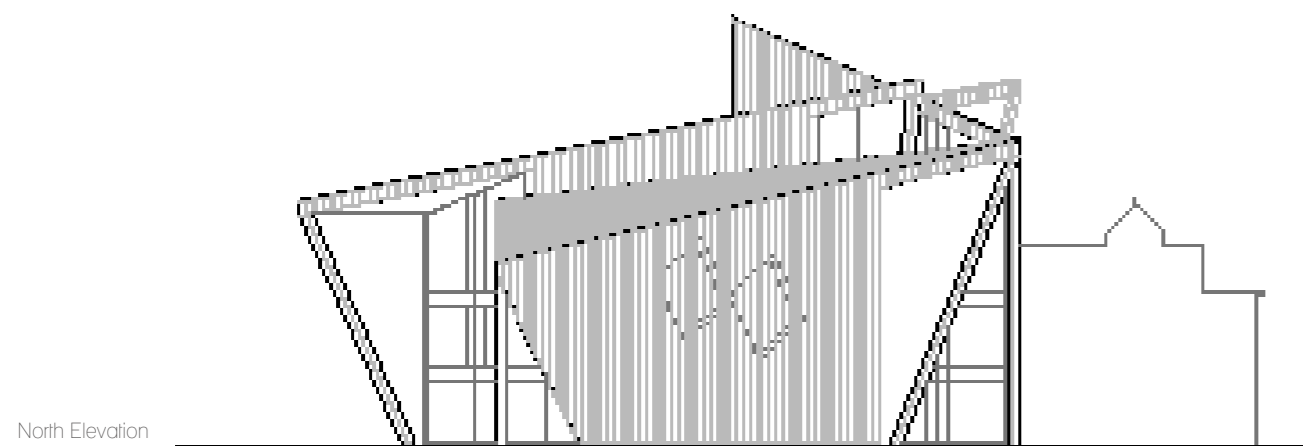
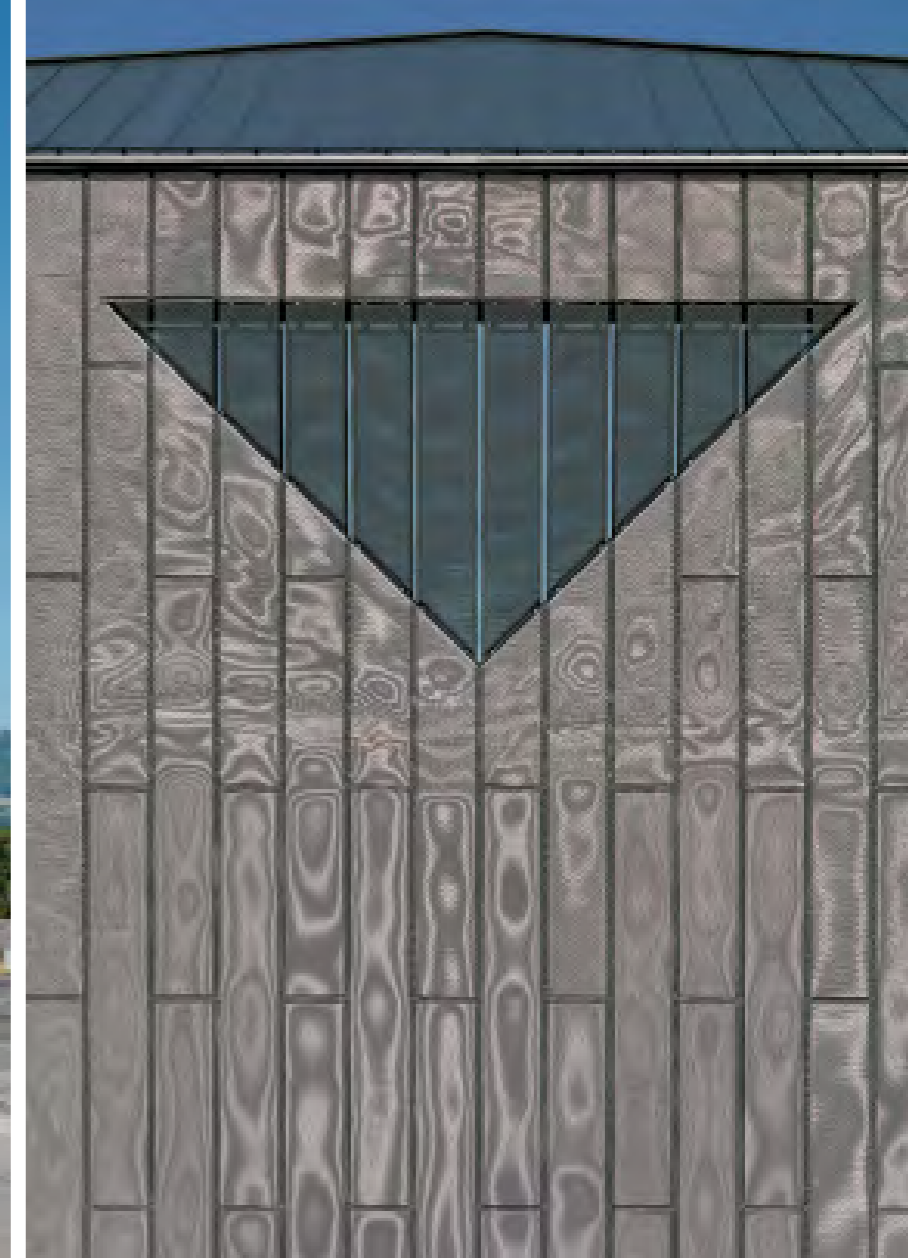
这座建筑是地平线上的一个新亮点，它连接工业区和旧城区，从城市传统的建筑群中撑起了它的三角形外观。项目结合创新技术，从细节到在建筑立面系统中从未使用过的新材料，如结构型玻璃和内部防火玻璃门。建筑的加热、通风、照明和能源消耗符合瑞士

and internal glazed fireproof doors. The building's heating, ventilation, lighting and energy consumption meets strict Swiss 'Minergie' standards, meaning that it has excellent sustainable credentials- the HV system, for example, is 'TAPS', activated by the structural shell of the building.

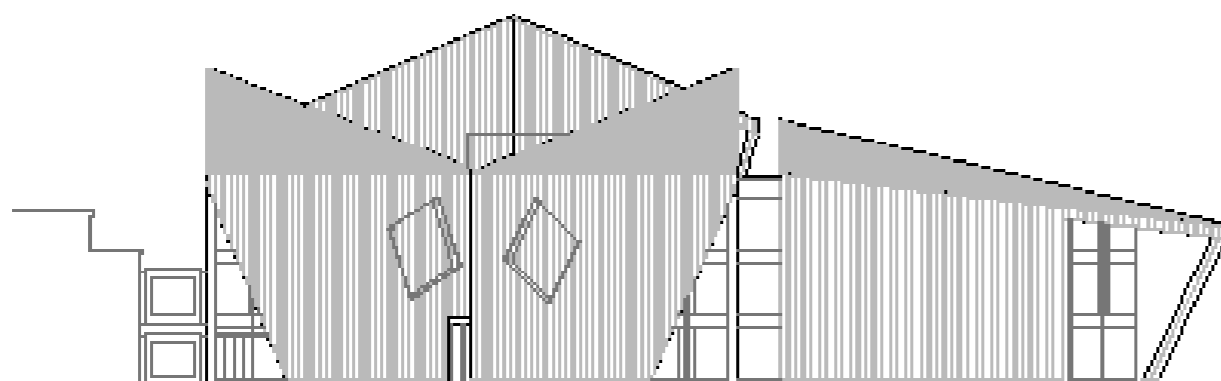
“Minergie”标准，也就是说它具有卓越的可持续性证书——HV系统，建筑物的结构外壳使建筑更具生机。



Site Plan
总平面图



North Elevation
北立面图



East Elevation
南立面图

SKIN ANALYSIS 表皮分析

ENERGY SKIN

Epidermal structure of the building uses new materials that haven't been used in architecture before, such as an internal structure of glass and fireproof glass door, and in conformity with Switzerland "Minergie" standards.

节能表皮

建筑的表皮结构运用的都是未在建筑中使用过的新材料，如结构型玻璃和内部防火玻璃门，并符合瑞士“Minergie”标准。

STRUCTURE AND MATERIAL 结构与材料

STRUCTURE

reinforced concrete

MATERIAL

plaster, concrete, wood, glass

结构

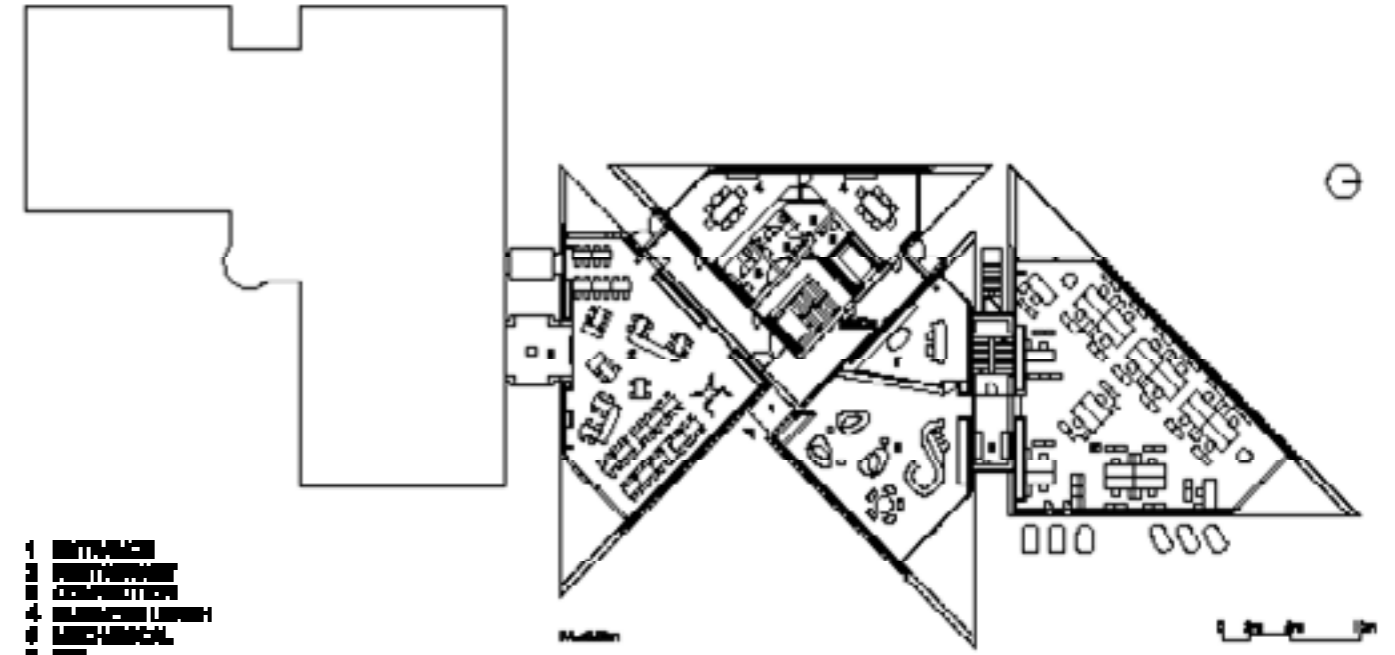
钢筋混凝土

材料

石膏、混凝土、木材、玻璃

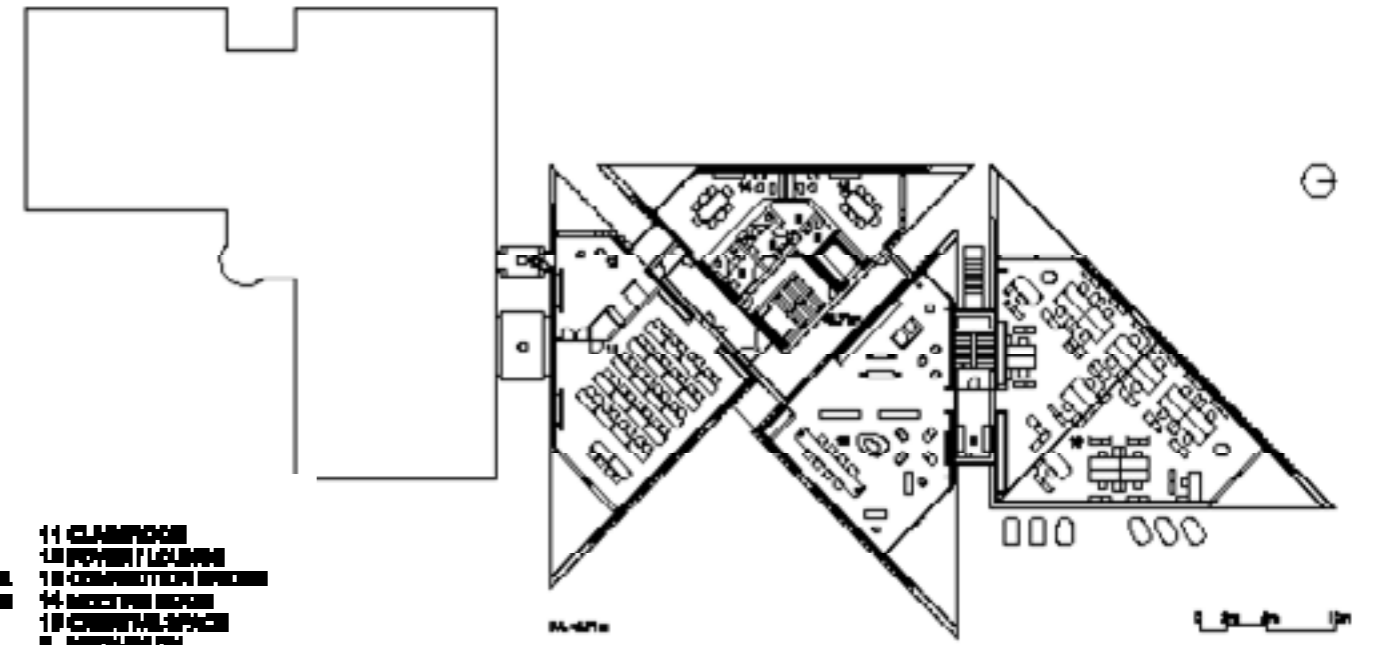


- 1 WORKSPACE
- 2 RECEPTION
- 3 CONFERENCE ROOM
- 4 CONFERENCE LUNCH
- 5 TECH HUB
- 6 TOILET
- 7 BATHROOM
- 8 OFFICE
- 9 OFFICE
- 10 OFFICE



Ground Floor Plan
首层平面图

- 11 RECEPTION
- 12 CONFERENCE ROOM
- 13 CONFERENCE LUNCH
- 14 CONFERENCE LUNCH
- 15 CONFERENCE LUNCH
- 16 CONFERENCE LUNCH
- 17 CONFERENCE LUNCH
- 18 CONFERENCE LUNCH
- 19 CONFERENCE LUNCH
- 20 CONFERENCE LUNCH



2nd Floor Plan
2层平面图

One of Jansen's main objectives for the project is to make the Campus a creative and engaging place for all their employees. The building's work spaces are open plan, with each employee have their own custom designed workstation. (Many furniture pieces have been custom designed and made for the project and stand alongside the chosen brands of Alias and Capellini). All spaces look out across the Rheintal and the geometry of the building means that visitors and employees alike are offered unexpected glimpses sliced out of the landscape. The landscaped park surrounding the building includes 80 trees, 35 different species representative of those of the region. The project also sees the beginning of the Jansen Art collection, containing works by international contemporary artists

詹森的主要目标之一是使营地成为对每个员都有创造性活力的工作场所。建筑物的工作空间是开放式的，每个员工可拥有自己设计的工作空间。（许多办公用具专为本项目设计，品牌来自 Alias 和 Capellini）。从莱茵河望过来，所有空间和建筑物外形意味着每个游客和员工都能从建筑物景观中分享到惊鸿一瞥。建筑物周围的景观公园包括 80 棵树，35 种不同的树种代表不同地区。本项目还是詹森艺术收藏馆的一部分，届时詹森艺术收藏馆将收藏国际当代艺术家的作品。