

JANSEN CAMPUS

얀센 캠퍼스

ARCHITECT_DAVIDE MACULLO ARCHITECTS

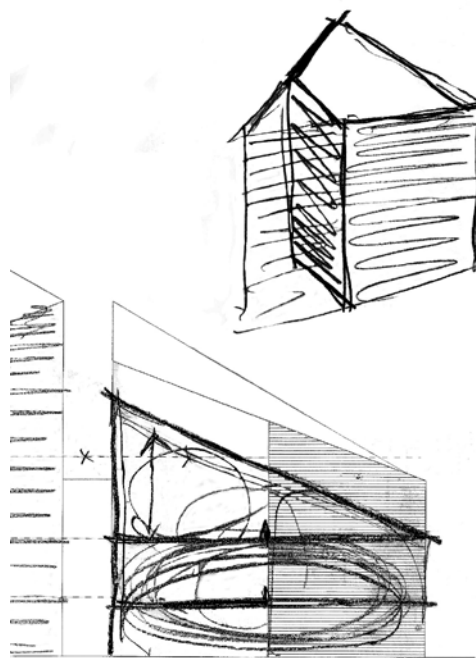
The Jansen Campus lies in the village of Oberriet, in the Rhine valley, one of the most industrialised areas of Switzerland. It was preceded resulting from the necessary expansion of existing industrial structures and which then allowed for the creation of spaces on a human scale within the existing fabric. One of Jansen's main objectives for the project is to make the Campus a creative and engaging place for all their employees. The building's work spaces are open plan, with each employee have their own custom designed workstation. All spaces look out across the Rheintal and the geometry of the building means that visitors and employees alike are offered unexpected glimpses sliced out of the landscape. The project began three years ago with a concept design and has become a reality that has taken on regional importance, representative of genuine Swiss quality, design, craftsmanship, construction and economy. Jansen is committed to the sustainable management of its production and logistics and

in keeping with the company's ethic and technical excellence in this field, the building meets the exacting MINERGIE standards, with efficient energy use and the reduction of environmental pollution ensuring the enhanced quality of life for the users of the building and a competitiveness in maintenance costs. For example the building uses ground water for the heating and cooling and runs on a heat recovery system, drawing attention to the company's experience in energy efficiency and production of photovoltaic elements.

Written by DAVIDE MACULLO ARCHITECTS

Location Oberriet, Switzerland **Use** Office building **Site area** 3,705m² **Building area** 1,100m² **Gross floor area** 3,300m² **Building scope** B1, 4F **Structure** Reinforced Concrete **Completion** May 2012 **Project Architect** Lorenza Tallarini **Client** Jansen **Photographer** Enrico Cano **Editorial design** Shin Min Ki **Editor** Kong Eul Chae



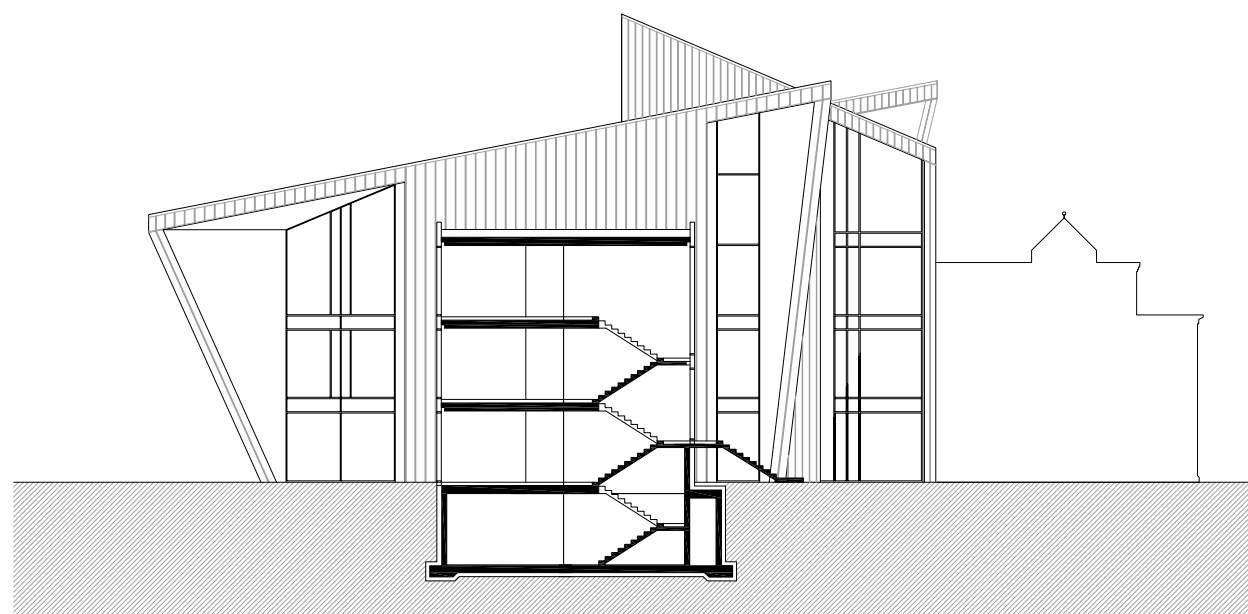


SKETCH

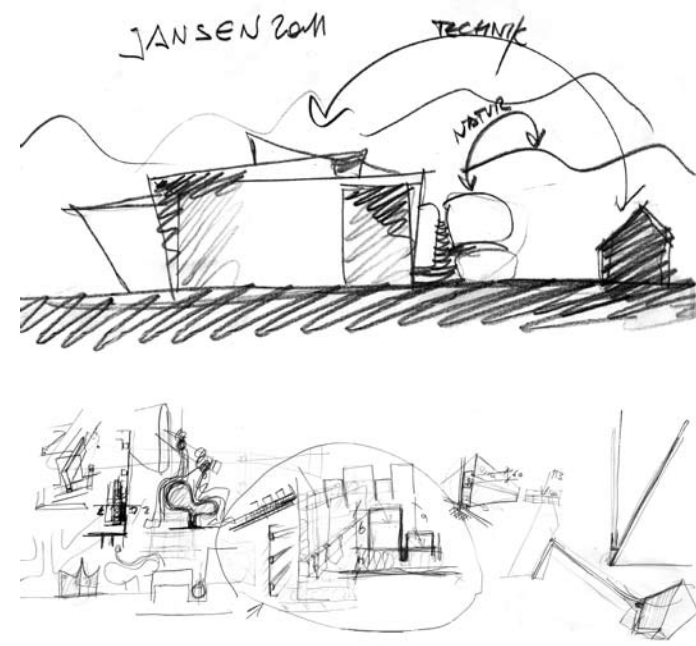
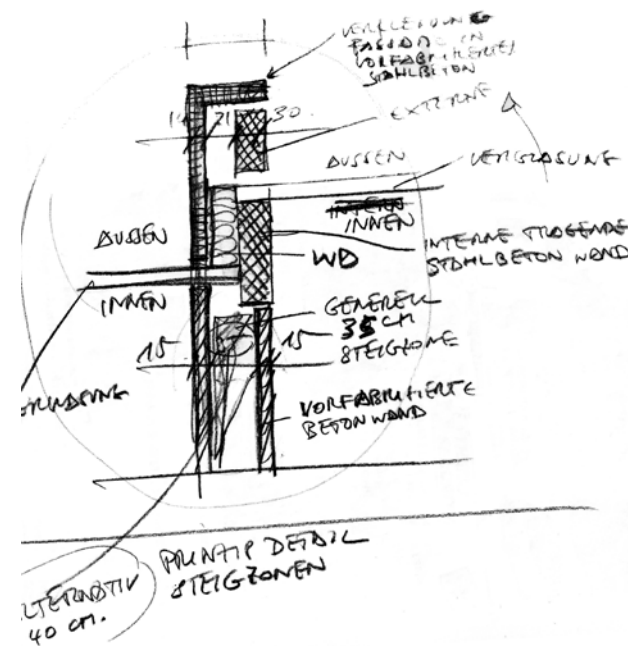


〈안센 캠퍼스〉는 스위스의 가장 산업화된 지역 중 하나인 라인 밸리의 오베리에트 마을에 위치하고 있다. 이 프로젝트는 기존의 산업 설비를 확장하면서 발생한 소규모 도시화 이후에 시행되었으며, 이로 인해 기존 구조에서 인간적인 규모의 공간으로 탄생하였다. 안센 프로젝트의 목표는 해당 시설 모든 직원들에게 창조적이고 참여적인 공간으로 탈바꿈해주는 것이었다. 작업 공간을 개방형으로 설계하여 직원들이 각각의 취향에 맞게 작업장을 사용할 수 있도록 하였다. 건물 어느 곳에서든 라인 밸리를 조망할 수 있게 설계되었으며, 방문객과 직원 모두가 아름다운 풍경을 즐길 수 있게 설계하였다. 해당 프로젝트는 콘셉트 디자인을

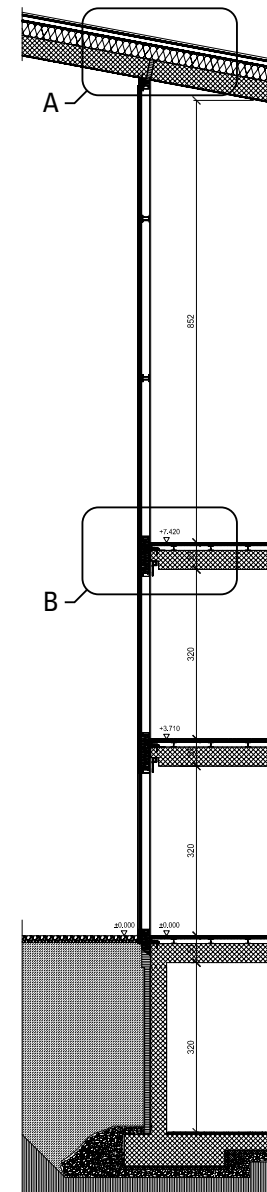
바탕으로 3년 전에 착공하여, 지역적 중요성과 스위스의 진정한 가치, 디자인, 장인정신, 건축, 경제를 대표하는 건축물로 완성하였다. 해당 분야에서 최고의 윤리 및 기술 기준에 따라 생산 및 유통을 지속 가능하게 관리하는데 중점을 두었으며, 스위스 친환경 건축인증인 MINERGIE에 정확하게 부합하고 있다. 사용자의 보다 나은 삶의 질과 유지 비용 저감을 위해 효율적으로 에너지를 사용하고 환경오염물질을 효과적으로 줄였다. 또한 냉난방과 열저장 시스템에 지하수를 사용하여 선진화된 에너지 효율성 및 태양전지 생산기술로 많은 이목을 집중시켰다. 글: 다비데 마콜로 아키텍츠



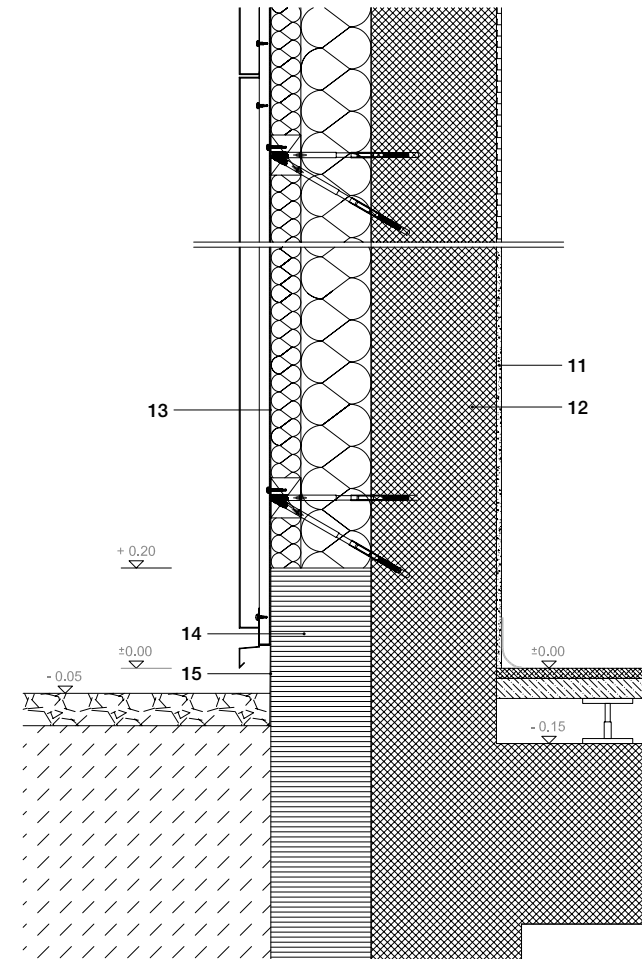
SECTION



SKETCH



WALL SECTION



DETAIL C

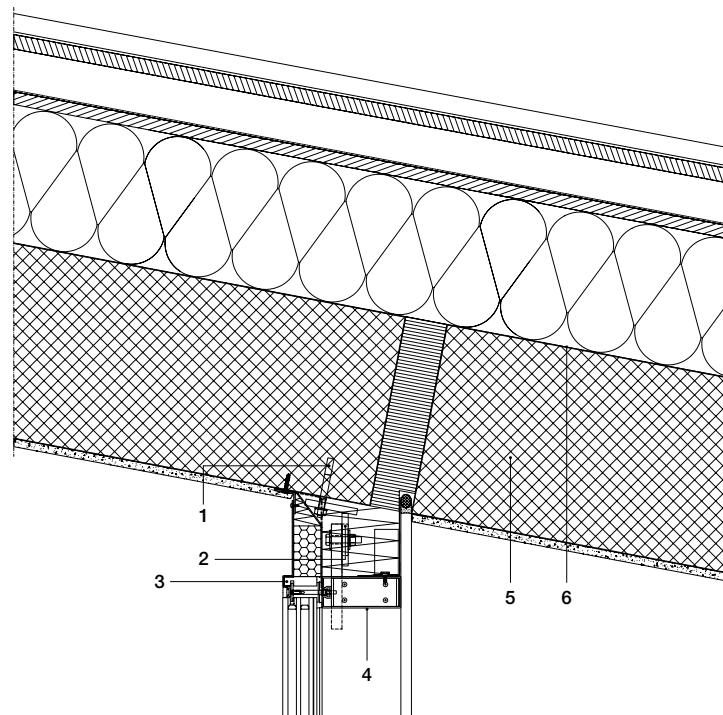


- 1 FIXING PIN
- 2 STEEL SHEETING 100X12MM, L=200M
- 3 ALUMINIUM SHEETING 2MM, GRAY
- 4 JANSEN VISS FACADES WHITE
- 5 REINFORCED CONCRETE

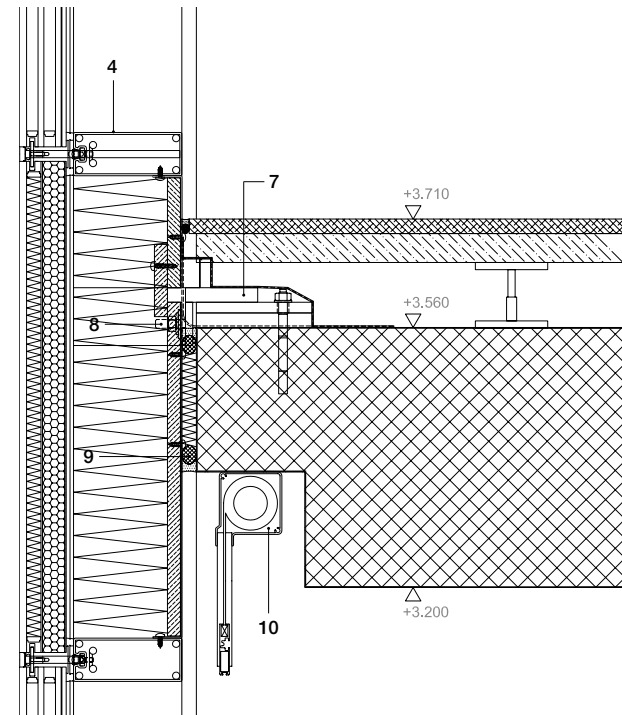
- 6 VAPOUR BARRIER
- 7 POINT FIXINGS
- 8 THREADED STEEL BOLT
- 9 GLASS WOOL
- 10 ROLLER BLIND

- 11 PLASTER
- 12 CONCRETE WALL 250MM
- 13 WIND PROTECTION LAYER, PEARL WHITE COLOUR
- 14 RIGID INSULATION 200MM
- 15 VISIBLE PROTECTION PLATE, BONDED

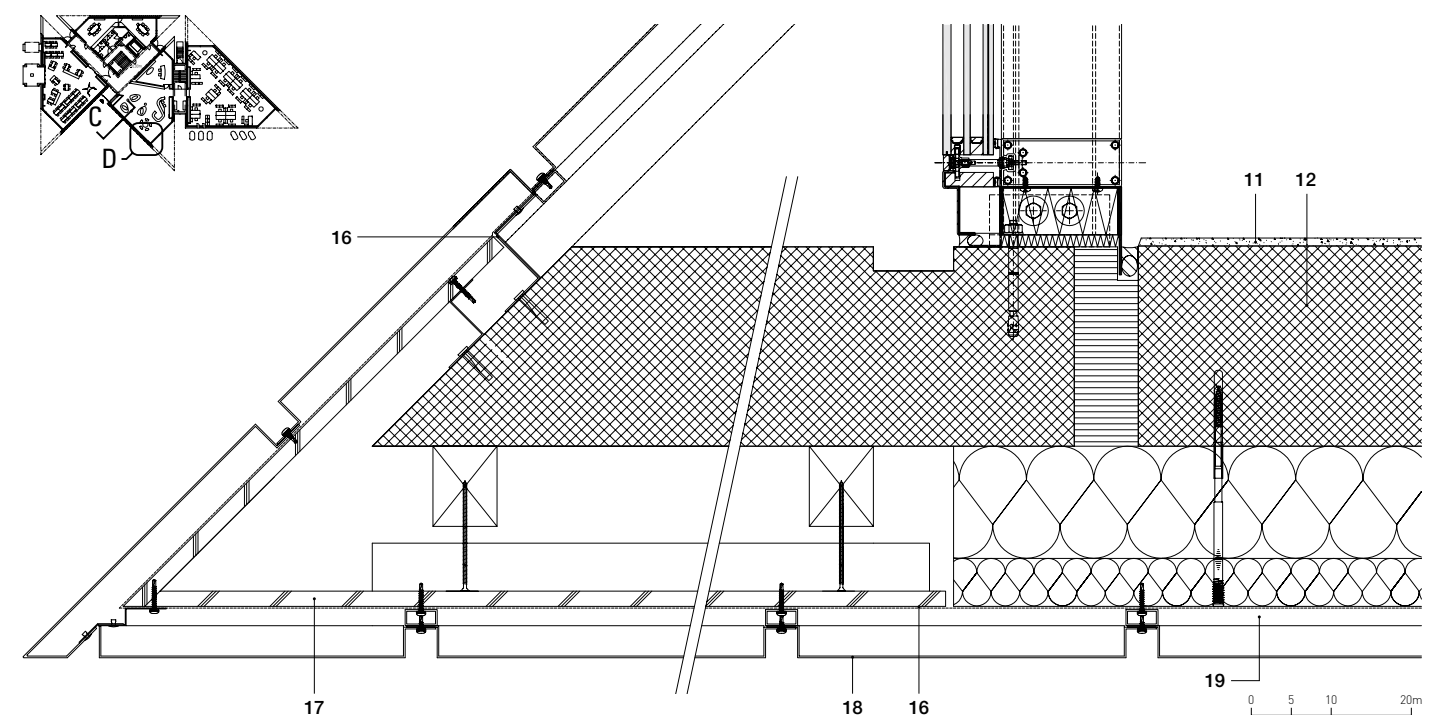
- 16 ALUMINIUM L-PROFILE 2.0MM
- 17 LAYERED BOARD 19MM
- 18 RHEINZINK DARK PREP ATINATED STRETCHED MESH
- 19 HORIZONTAL TIMBER BATTEN 60X60MM



DETAIL A



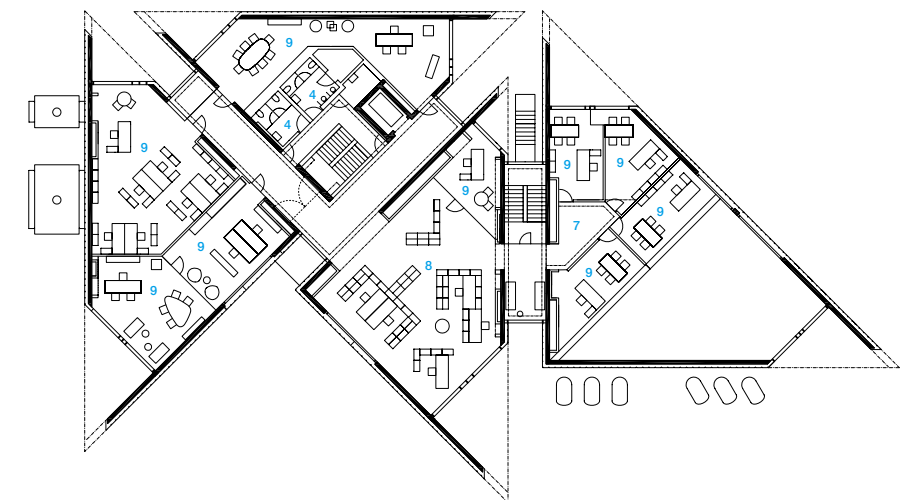
DETAIL B



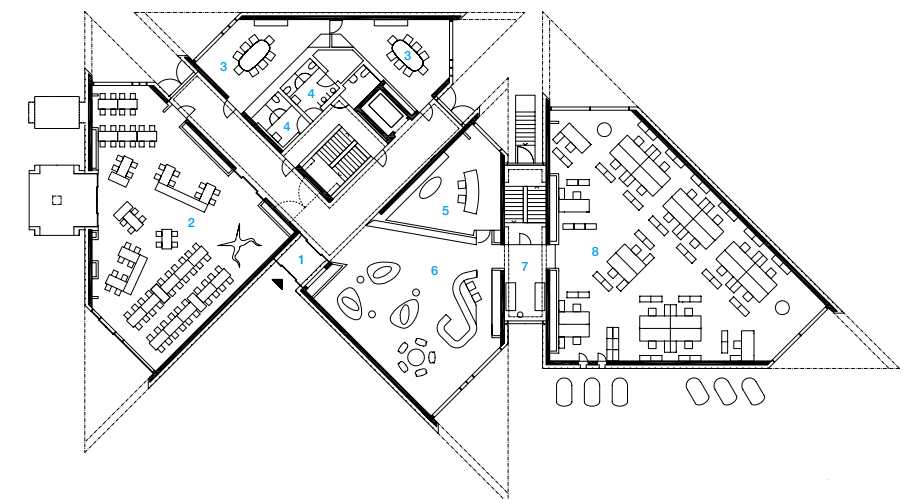
DETAIL D



- 1 ENTRANCE
- 2 RESTAURANT
- 3 BUSINESS LUNCH
- 4 TOILET
- 5 MISSION CONTROL
- 6 RECEPTION
- 7 LOUNGE
- 8 OPEN SPACE OFFICE
- 9 OFFICE



LEVEL +7.42 FLOOR PLAN



LEVEL +0 FLOOR PLAN