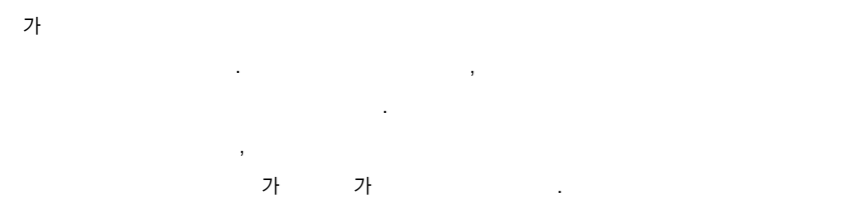


HOUSE IN CANOBBIO

Davide Macullo Architects I Davide Macullo

Nestled on the Alpine slopes north of Lugano, this house is characterised by a volumetric architecture that emerges from the terrain and follows the natural contour of the land. Its constructed volumes embrace the land in an organic and fluent sequence of spaces, each relating to each other and to the surrounding landscape. Carved in a clear square geometry, the spaces meet the slope and extend in a spiral, fluent movement that continuously changes the perception of the space and its relationship to the exterior, offering striking panoramic views across the hinterland and to Lake Lugano.



Location	Lugano, Ticino, Switzerland
Use	Housing
Site area	1,030m ²
Building area	700m ²
Building scope	3F
Structure	RC
Completion	2009
Design collaborator	Michele Alberio
Interior design	Davide Macullo e Marco Strozzi
Works supervision	Direzione di Lavori SA, Lugano, Switzerland
Structural engineer	Ideal Ingegno, Switzerland, Ing. Luigi Pellegrinelli
Building engineer	Franco Semini, Switzerland
Photos offer	Davide Macullo Architects

가
1,030m ²
700m ²
3
2009

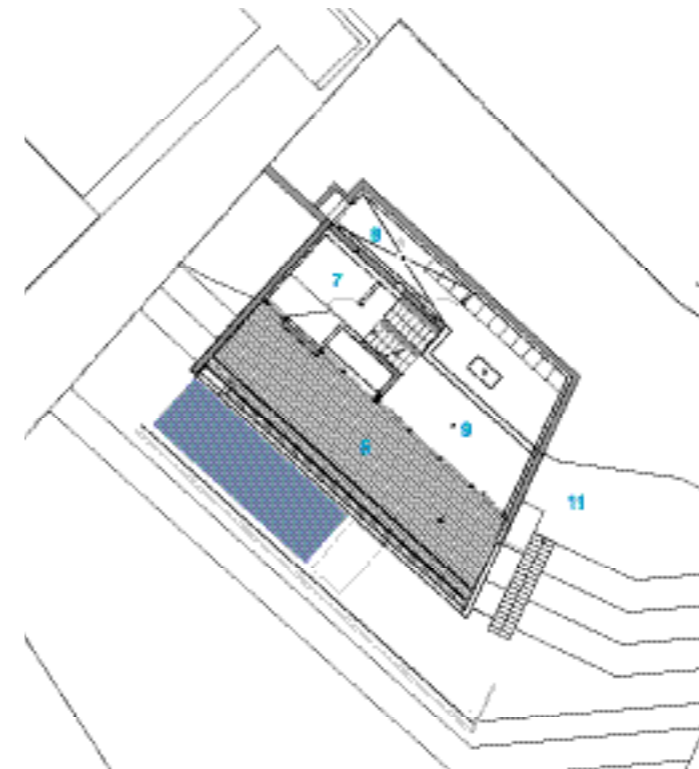




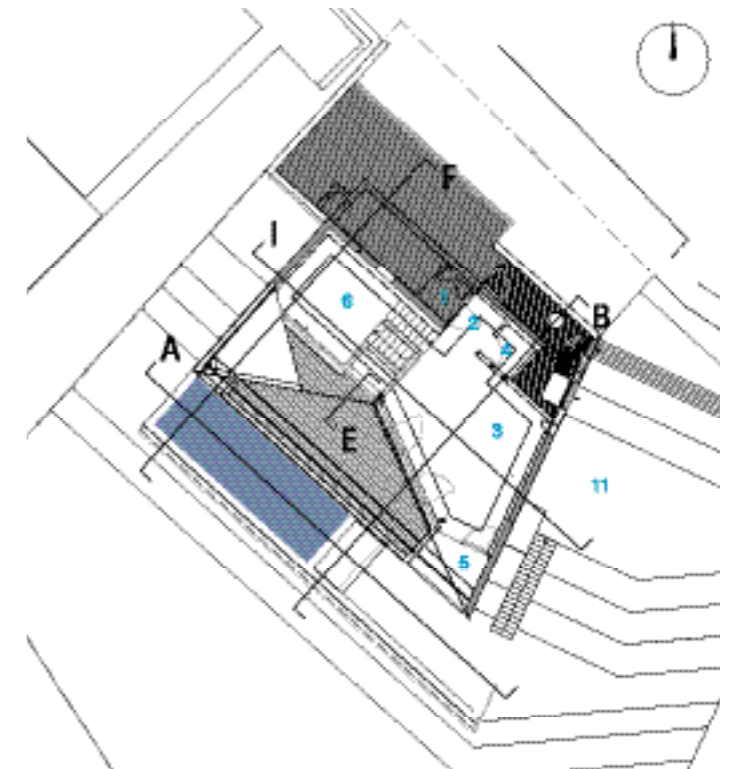
- 1 COVERED ENTRY
- 2 ENTRY
- 3 LIVING ROOM
- 4 TOILET
- 5 TERRACE
- 6 VOID ON READING ROOM
- 7 BATHROOM
- 8 LAUNDRY

- 9 DINING ROOM
- 10 STUDY ROOM
- 11 GARDEN
- 12 SWIMMING POOL
- 13 BEDROOM
- 14 MASTER BEDROOM
- 15 WALKING CLOSET
- 16 CORRIDOR

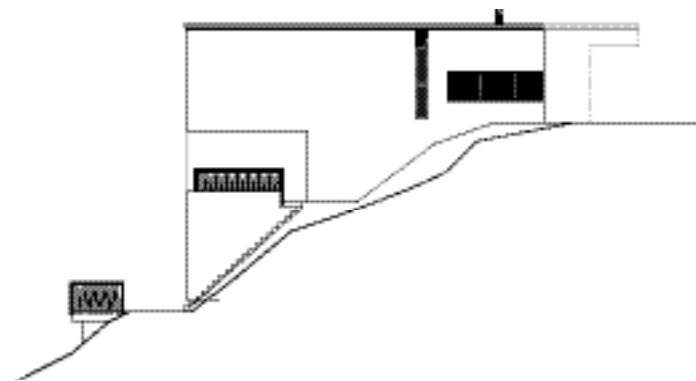
- 1
- 2
- 3
- 4
- 5
- 6
- 7
- 8
- 9
- 10
- 11
- 12
- 13
- 14
- 15
- 16



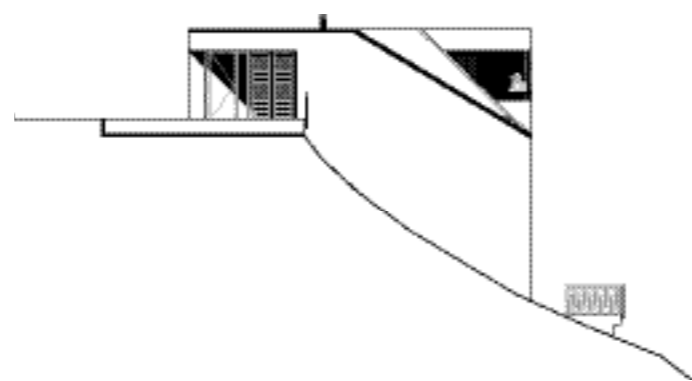
floor plan_level -2.80m / -2.80m



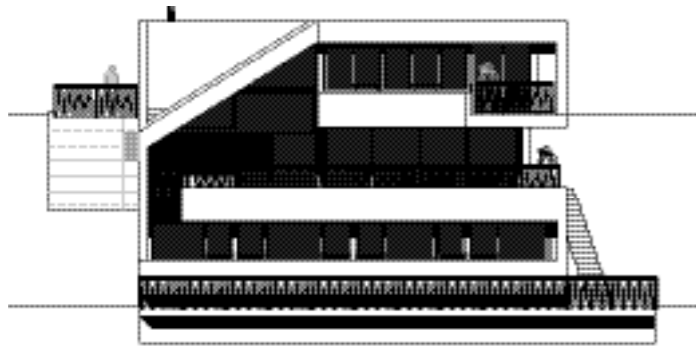
floor plan_level ±0.00m / ±0.00m



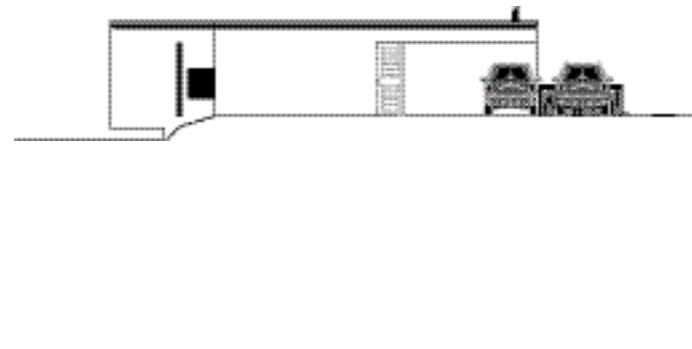
east elevation /



west elevation /



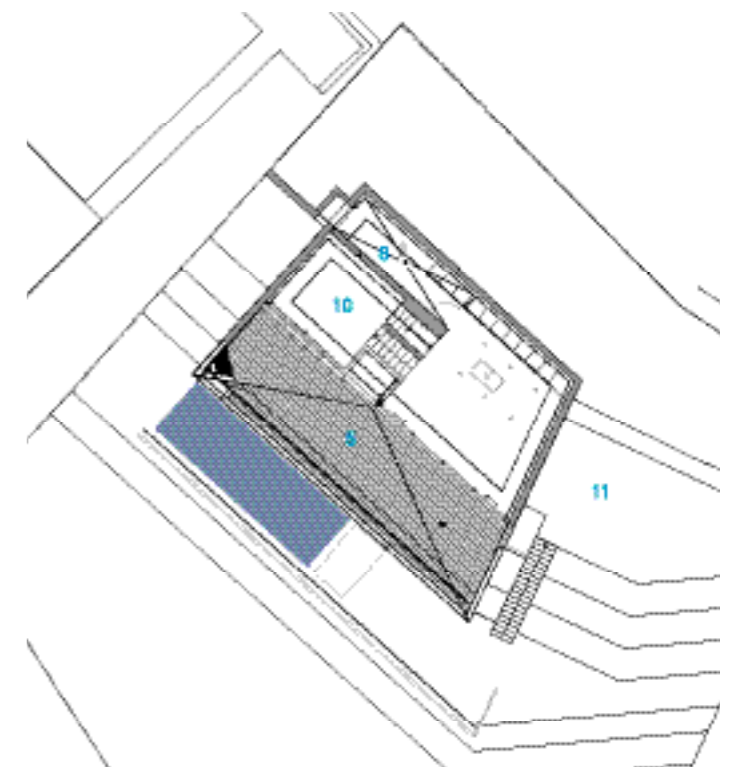
south elevation /



north elevation /



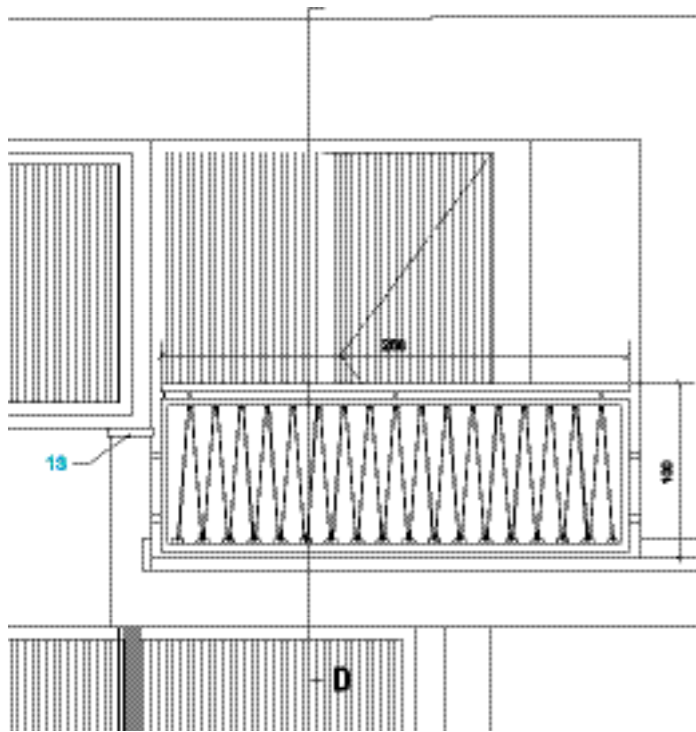
floor plan_level -5.60m / -5.60m



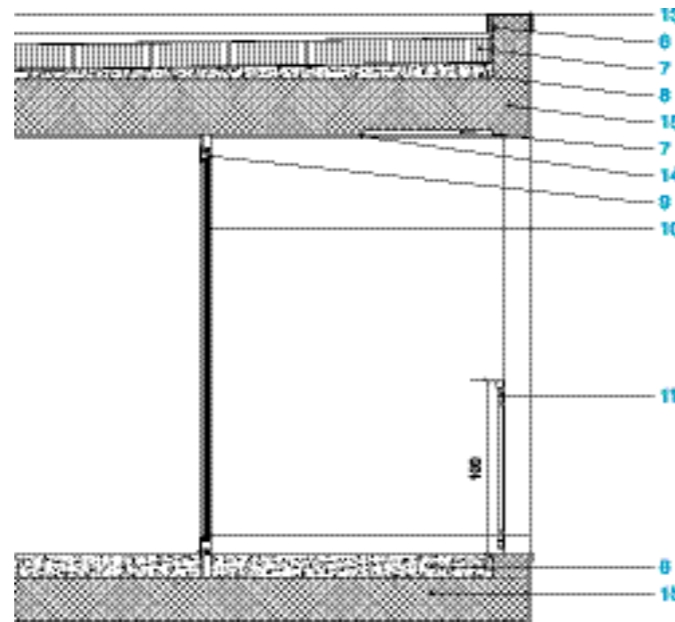
floor plan_level -1.40m / -1.40m



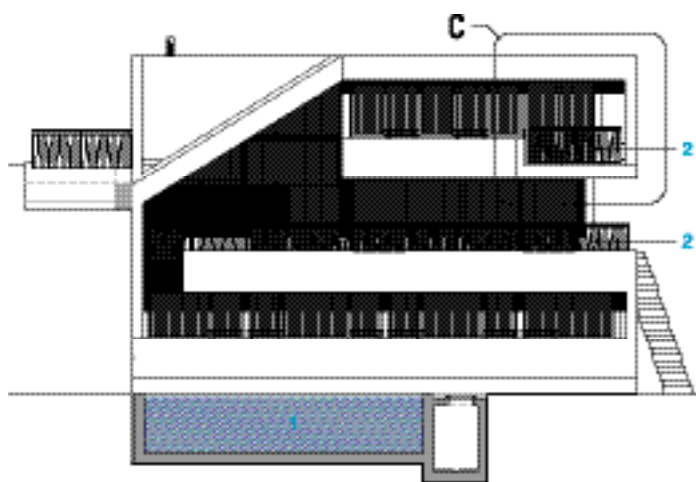
sketch /



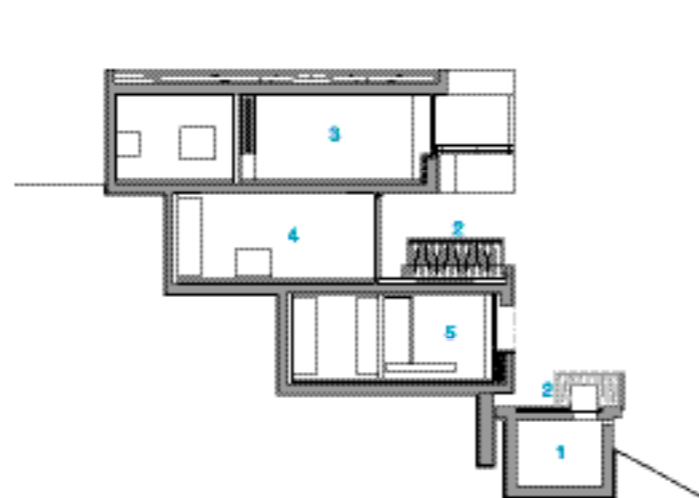
partial elevation C / c



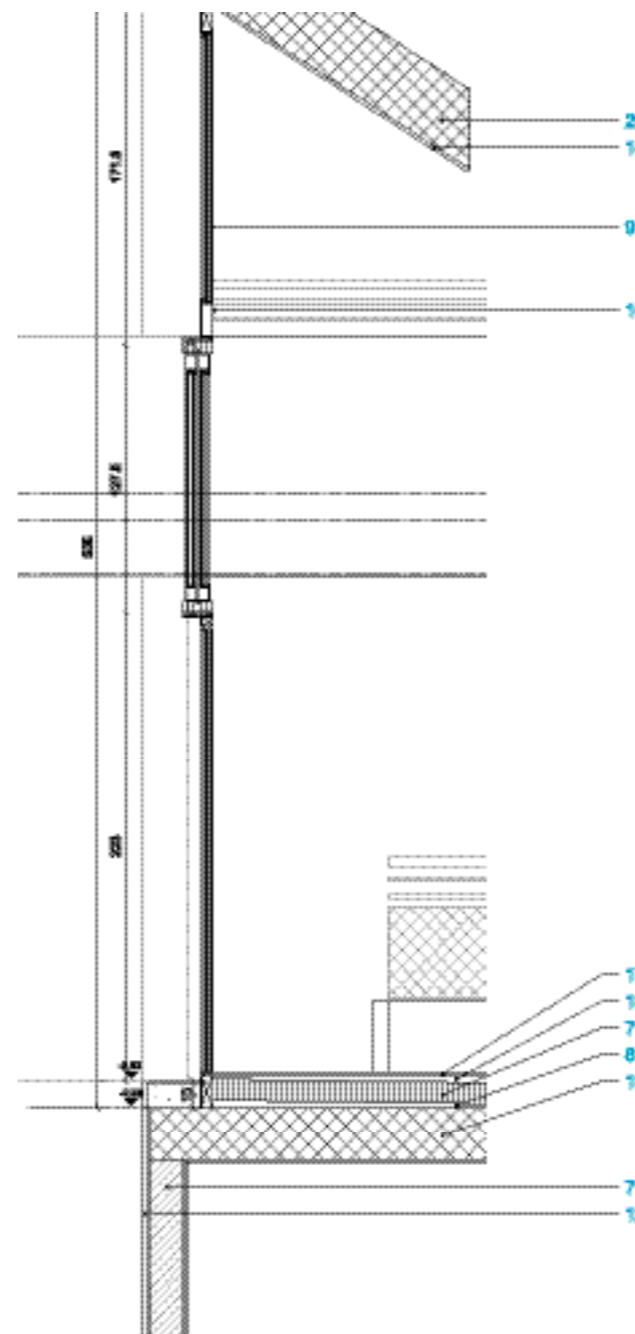
outer wall section D / d



cross section A / A

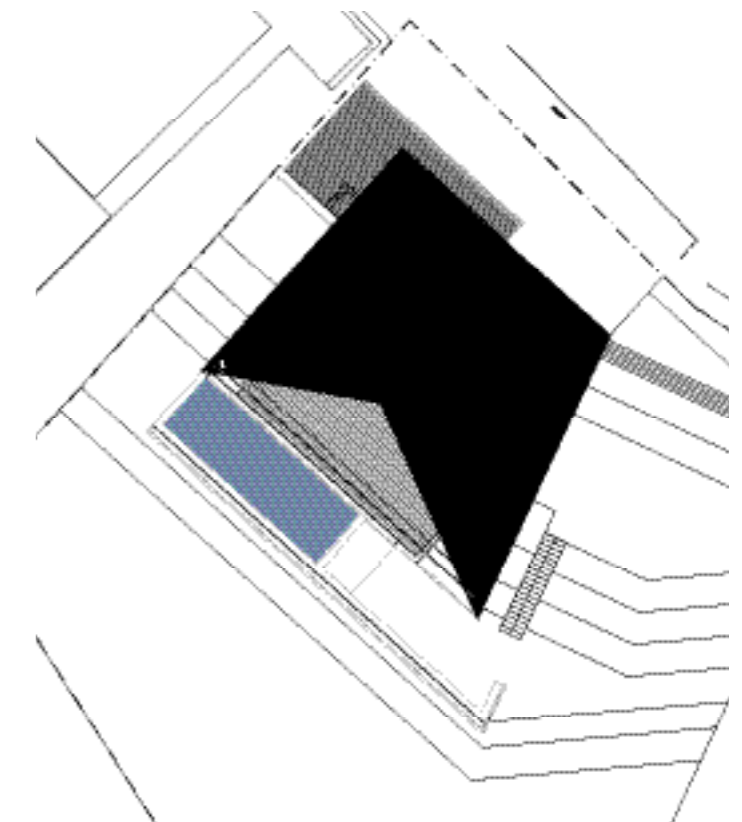


cross section B / B

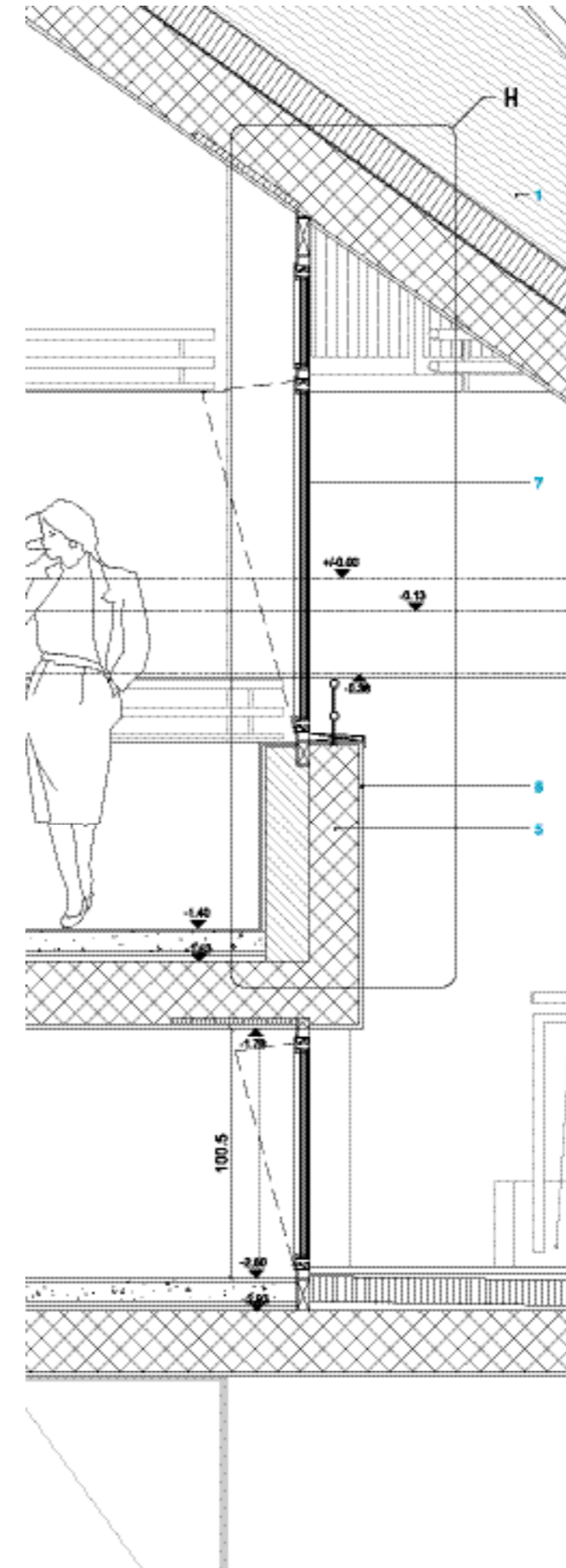


window section E / E

- | | |
|--------------------------|------------------------------|
| 1 SWIMMING POOL | 11 STEEL BALUSTRADE |
| 2 TERRACE | 12 DOUBLE PLASTERBOARD |
| 3 LIVING ROOM | 13 STEEL PROFILE |
| 4 KITCHEN, DINING ROOM | 14 PLASTER FINISH |
| 5 BEDROOM | 15 REINFORCED CONCRETE |
| 6 VAPOUR BARRIER | 16 DOUBLE GLAZED WINDOW UNIT |
| 7 RIGID INSULATION | 17 STONE GRES FLOOR |
| 8 CONCRETE SCREED | 18 SEPARATING LAYER |
| 9 ALUMINIUM WINDOW FRAME | 19 REINFORCED CONCRETE FLOOR |
| 10 DOUBLE GLAZED WINDOW | 20 REINFORCED CONCRETE ROOF |



roof plan /

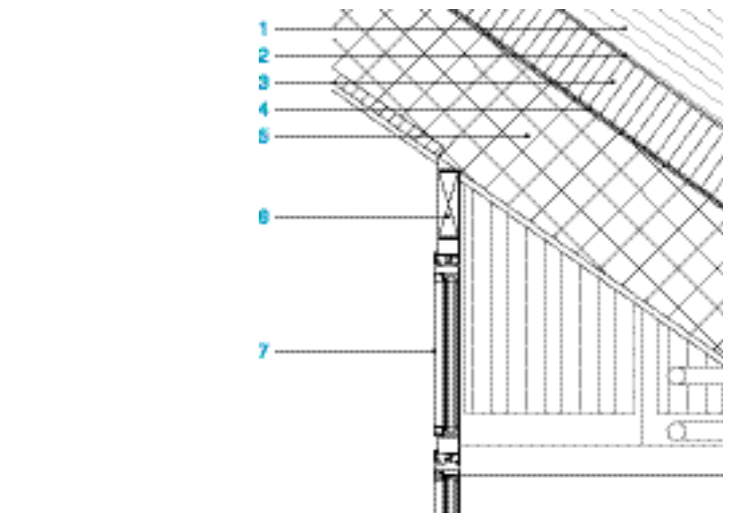


outer wall section G / G

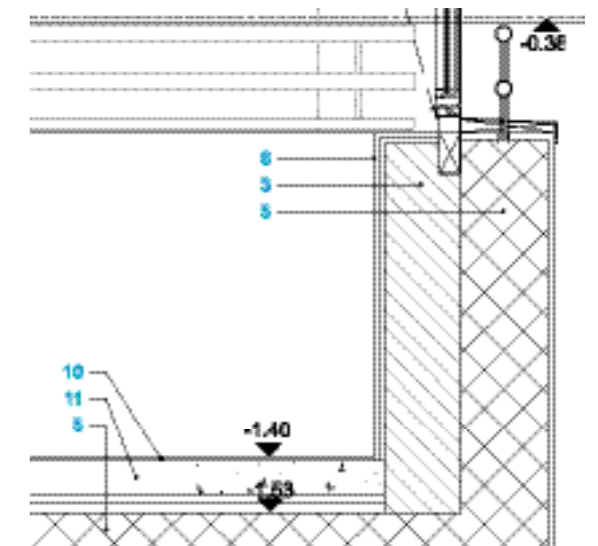
- | | |
|-----------------------|----|
| 1 SLATE CHIPPINGS | 1 |
| 2 WATERPROOF MEMBRANE | 2 |
| 3 RIGID INSULATION | 3 |
| 4 VAPOUR BARRIER | 4 |
| 5 REINFORCED CONCRETE | 5 |
| 6 ALUMINIUM FRAME | 6 |
| 7 WINDOW | 7 |
| 8 DOUBLE PLASTERBOARD | 8 |
| 9 SWIMMING POOL | 9 |
| 10 STONE GRES FLOOR | 10 |
| 11 CONCRETE SCREED | 11 |
| 12 TERRACE | 12 |
| 13 CARPARK | 13 |
| 14 LAUNDRY | 14 |
| 15 BEDROOM | 15 |



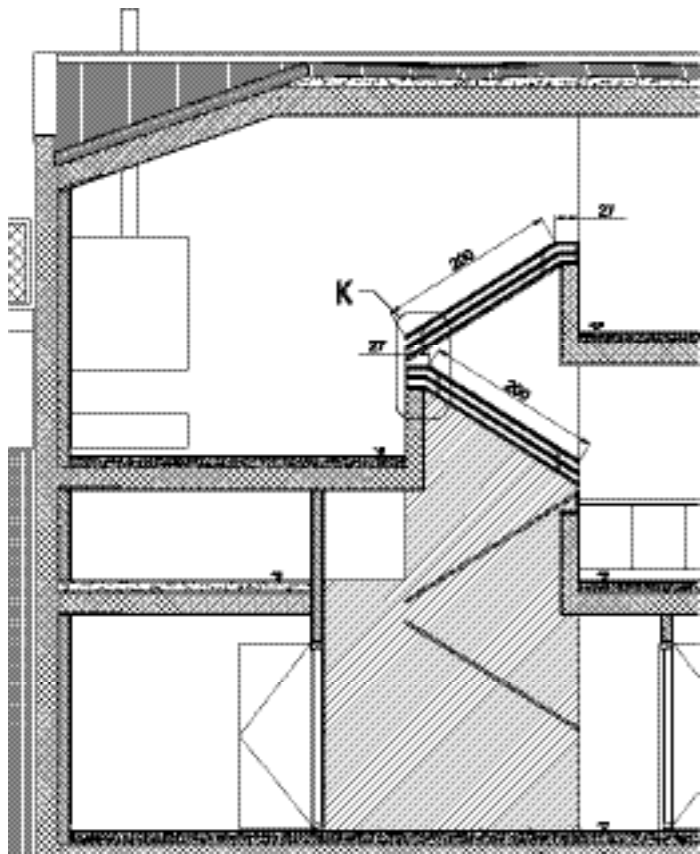
cross section F / F



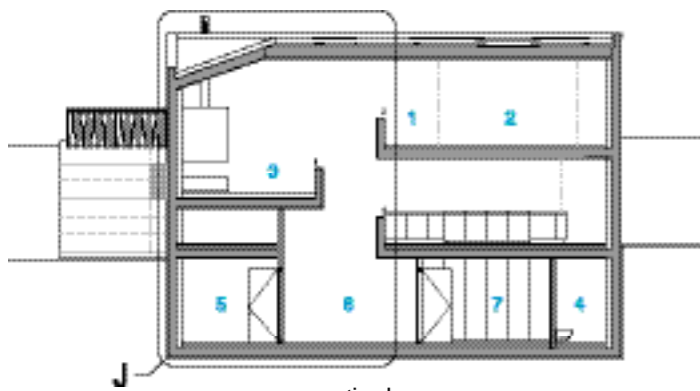
outer wall detail H / H



SECTION

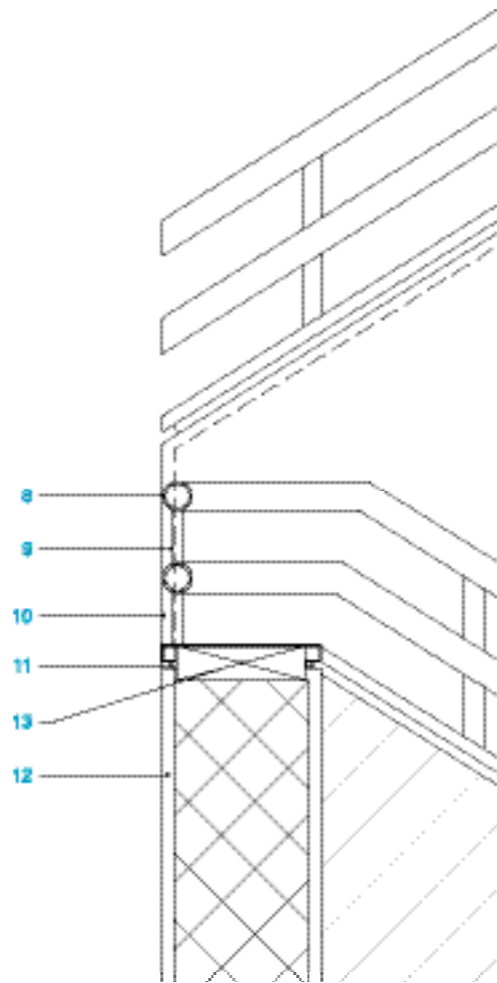


partial section J / J



cross section I / I

- | | |
|-----------------------------------|---------------|
| 1 ENTRY | 1 |
| 2 LIVING ROOM | 2 |
| 3 STUDY ROOM | 3 |
| 4 BATHROOM | 4 |
| 5 BEDROOM | 5 |
| 6 CIRCULATION | 6 |
| 7 BOUDOIR | 7 |
| 8 INOX TUBE PROFILE Ø4CM | 8 INOX Ø4CM |
| 9 UPRIGHT PROFILE INOX Ø2.5CM | 9 INOX Ø2.5CM |
| 10 THERMOCOATED COVERING RAL 9010 | 10 RAL 9010 |
| 11 SHUTTER | 11 |
| 12 PLASTERBOARD | 12 |
| 13 REINFORCEMENT | 13 |

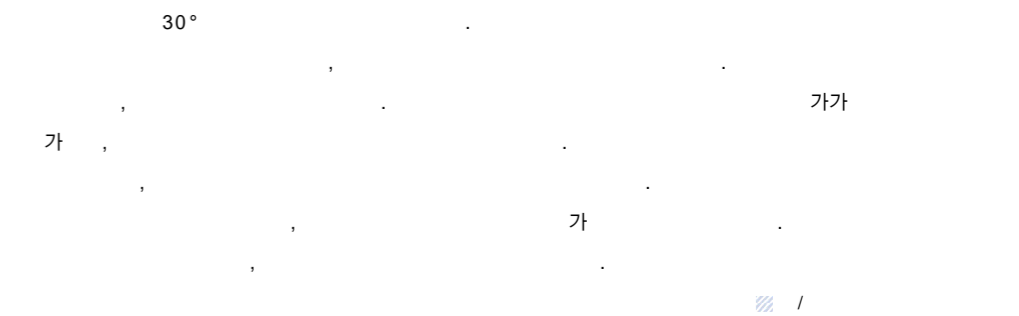


handrail section K / K

PROCESS

The house is sited on a south facing 30 degree slope. Due to the nature of the design, being a house that adheres to and follows its site, excavation has been kept to a minimum and no earth was removed from the site during construction. The geometry of the plan is generated by shifting levels and follows the fall of the site. The typology created by this staggered geometry underlies both the peculiarities of the landscape while also offering each of the levels a direct relationship with the surrounding gardens. The vertical connections relate all the spaces of the house in a spiral movement and is in a constant play with its new inhabitants' perception of time and scale. What is interesting about the house is the ability of the spaces to expand and extend into the landscape, allowing the external become part of the composition. While the individual spaces may be defined geometrically, each space flows into the next and continues to the external.

Text / Davide Macullo Architects



DAVIDE MACULLO : Born in Giomico, Switzerland in 1965. He lives and works in Lugano, Switzerland. Following commercial and technical studies in Zug and Lucerne, he graduated from the Professional University of Art & Design in Lugano in 1989. He has been a member of the Swiss Register of Architects and Engineers since 1998. After several study visits to Asia, the US and within Europe, he began his working career in the atelier of Mario Botta in 1990 as project architect with responsibility for international projects. He opened his atelier in 2000.

1965 : 1989
1989 : 1998
1998 : 1990
1990 : 2000