

全球建筑设计风潮 2 不规则 流体建筑



GLOBAL DESIGN

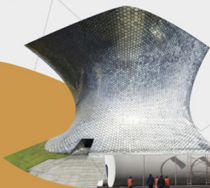
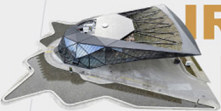


ThinkArchit 工作室 主编

TRENDS IN ARCHITECTURE



IRREGULAR FLUID ARCHITECTURE





不规则建筑
褶皱

办公建筑

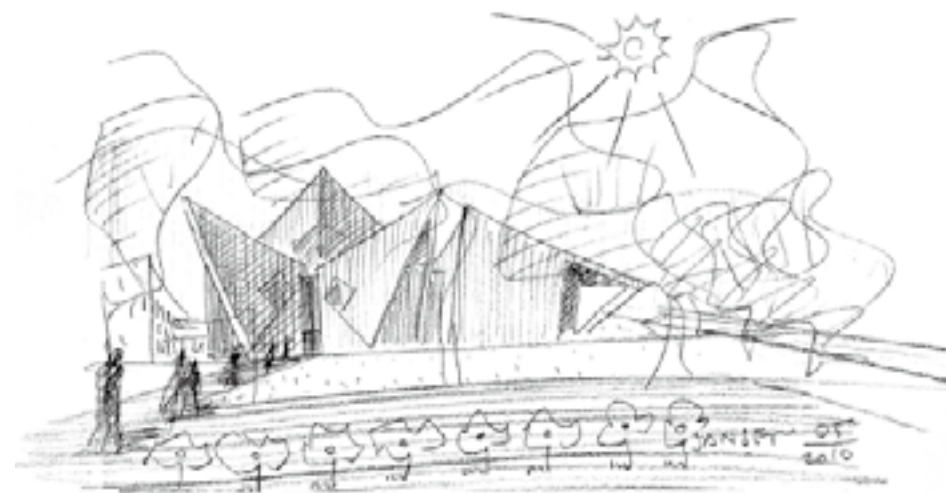
视觉亮点

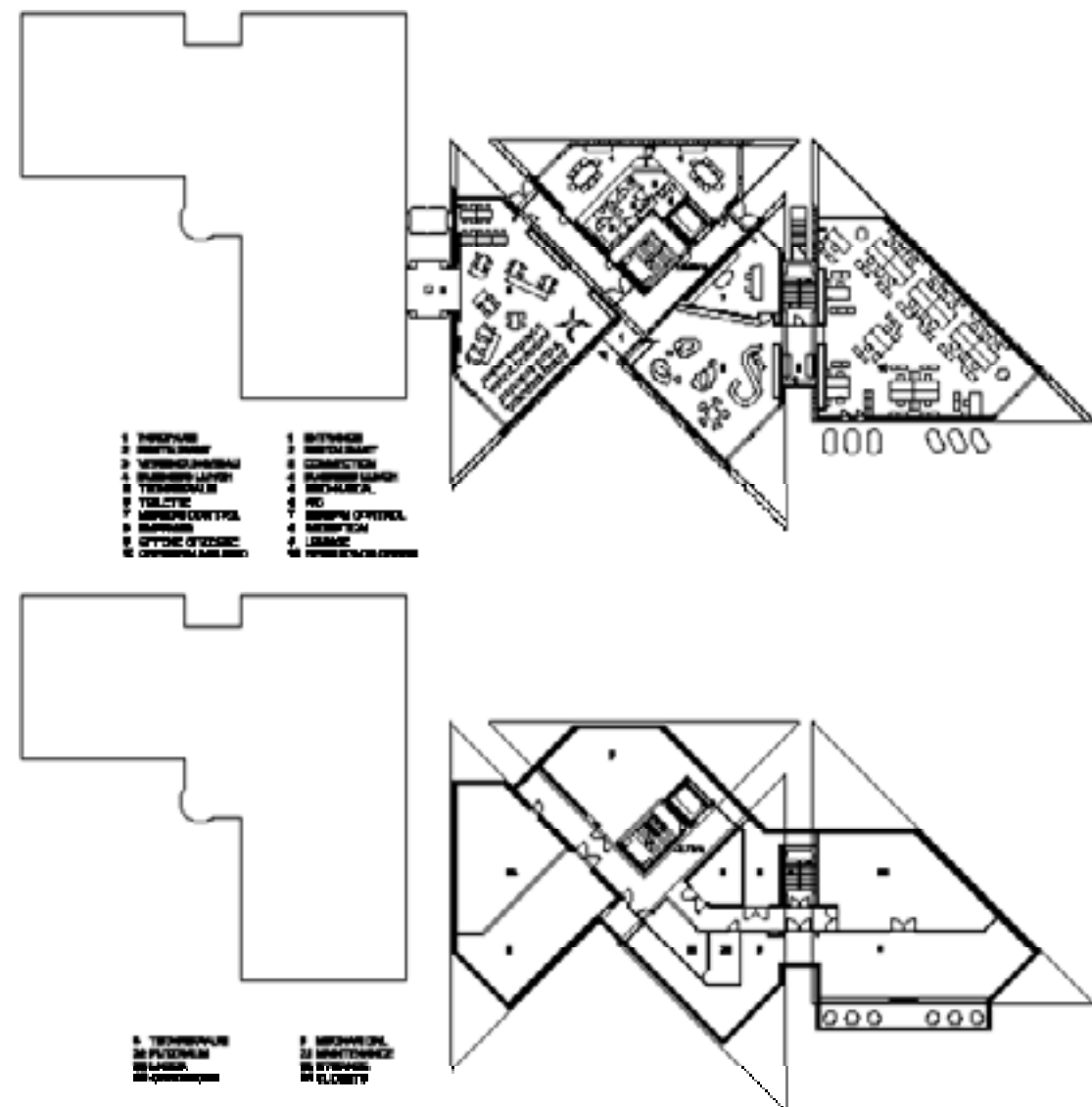
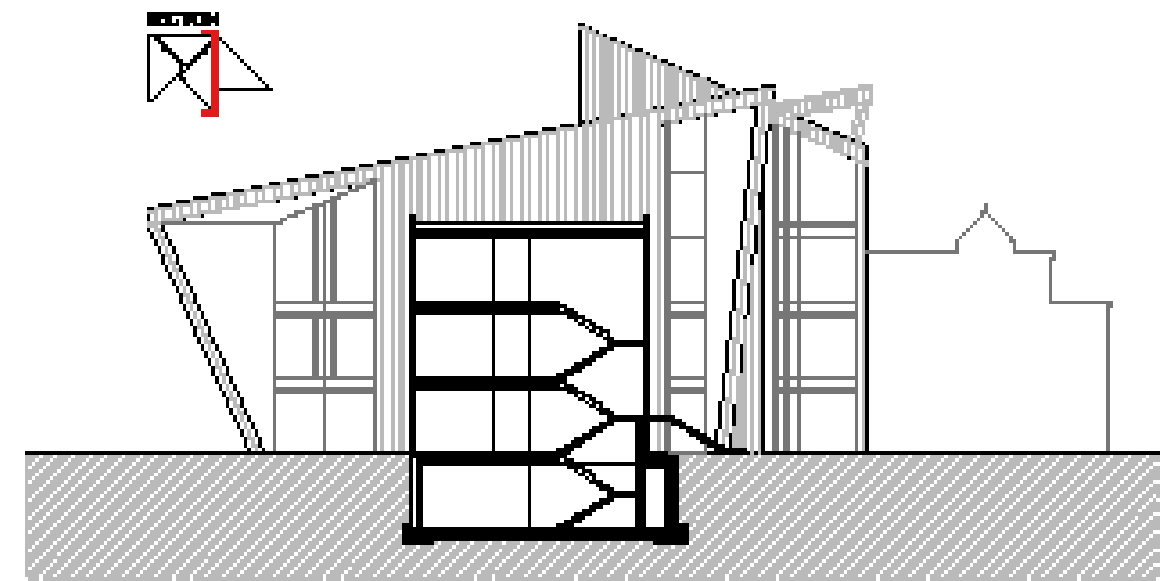
建筑外立面由大小不同的不规则斜面构成，各斜面倾斜角度不同，构成的整体却实现了视觉空间的平衡。

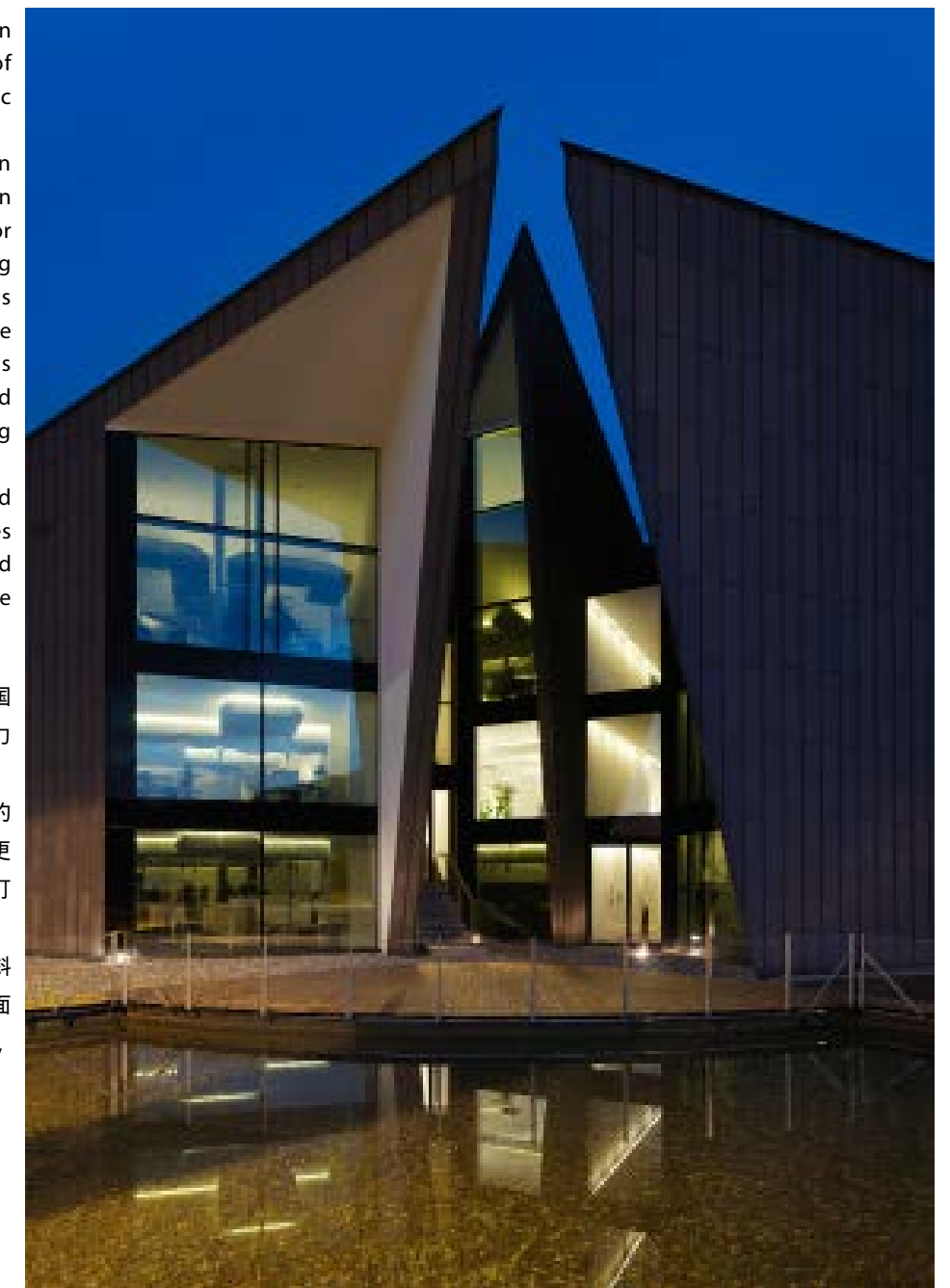
Jansen Campus

钢铁和塑料公司新总部

Design Company / 设计事务所: Davide Macullo Architects Location / 地点: Switzerland (瑞士)
Area / 面积: site 3 705 m², building 1 100 m², total floor 3 300 m² Photography / 摄影: Enrico Cano







The new Jansen Campus lies in the village of Oberriet, in the Rhine valley, one of the most industrialised areas of Switzerland. The company is currently run by a dynamic young team.

The new building was preceded by sort of mini urbanization of the Jansen site, resulting from the necessary expansion of existing industrial structures and which then allowed for the creation of spaces on a human scale within the existing fabric. This has led to the formation of a series of spaces that evoke the atmosphere of public squares. Given the site's potential for further development, the project has adopted the name 'CAMPUS- Campus für Innovation und Technik' - evoking a place of production, sharing, learning and research.

The facade is clad in a dark pre-patinated perforated Rheinzink mesh. Oberriet, like many other built landscapes in Switzerland, is typified by a multitude of different sized inclined planes, sloping in different directions, that manage to achieve a remarkable visual and spatial balance.

新建的办公建筑坐落在莱茵河谷的一座小镇中，这里是瑞士国内工业最为发达的一个地区。这个地方由一个年轻而富有活力的团队经营和管理。

项目开启之前，设计团队就制定了建筑设计的目标：对原有的工业建筑结构进行必要的扩建，在原有的空间架构内打造出更为适宜的功能空间。设计师设计了一系列的空间，将该项目打造成一处富有生产性和分享性的科研型办公环境。

建筑立面覆以深灰色的金属材料，由许多大小不同的不规则斜面构成。这些斜面虽然向不同方向倾斜，但构成的整体外立面实现了视觉空间的平衡，这种别致的外立面设计，富于创意，带给人们独特的视觉体验。

