

JANSEN CAMPUS

瑞士詹森园区新总部大楼

Architect: Davide Macullo Architects

Client: Jansen AG

Location: Switzerland

Site Area: 3,705 m²

设计公司：Davide Macullo 建筑事务所

客户：Jansen AG

地点：瑞士

占地面积：3 705 m²

STRUCTURE AND MATERIAL 结构与材料

STRUCTURE

Reinforced Concrete

MATERIAL

Plaster, Concrete, Wood, Glass

结构

钢筋混凝土

材料

石膏、混凝土、木材、玻璃



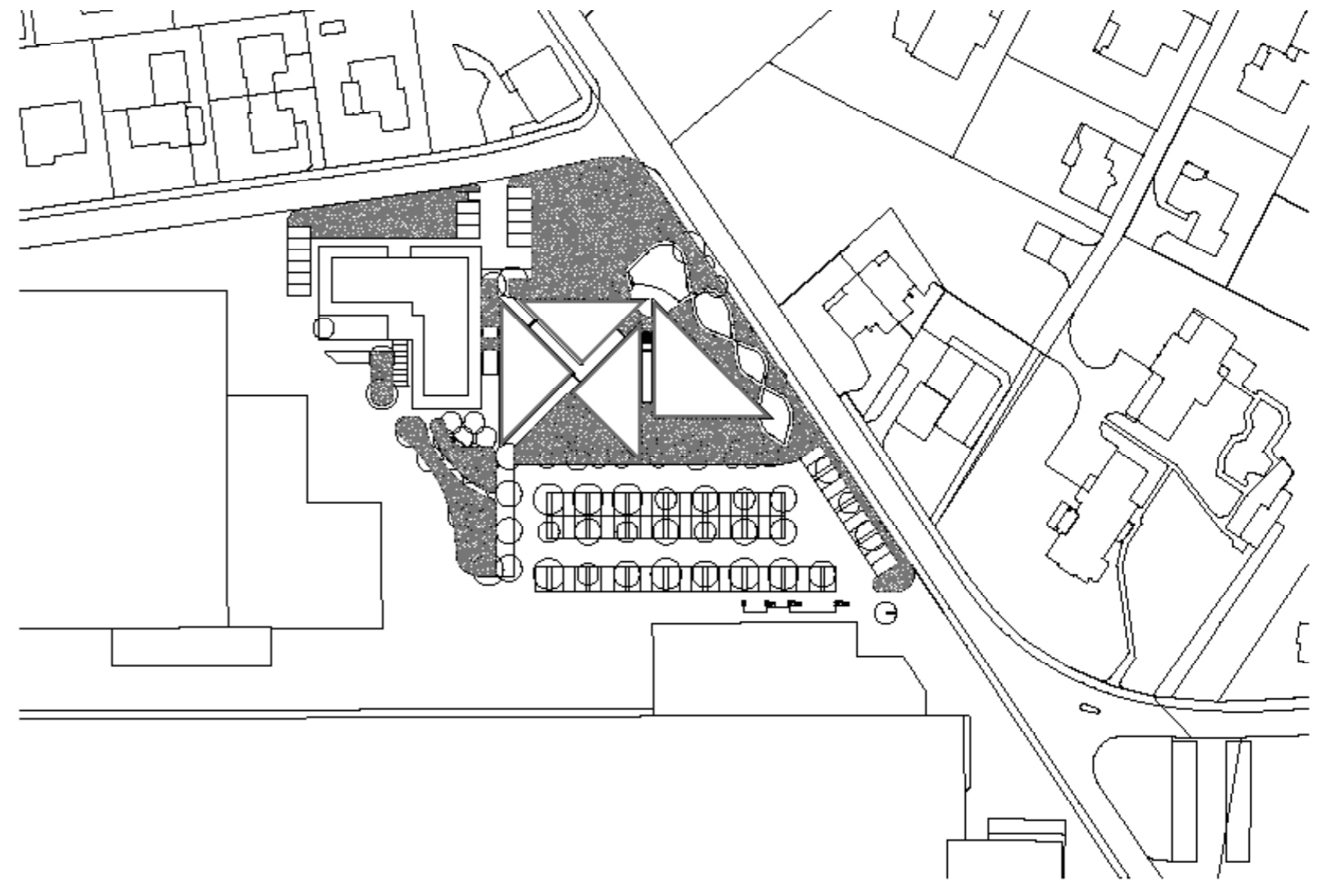


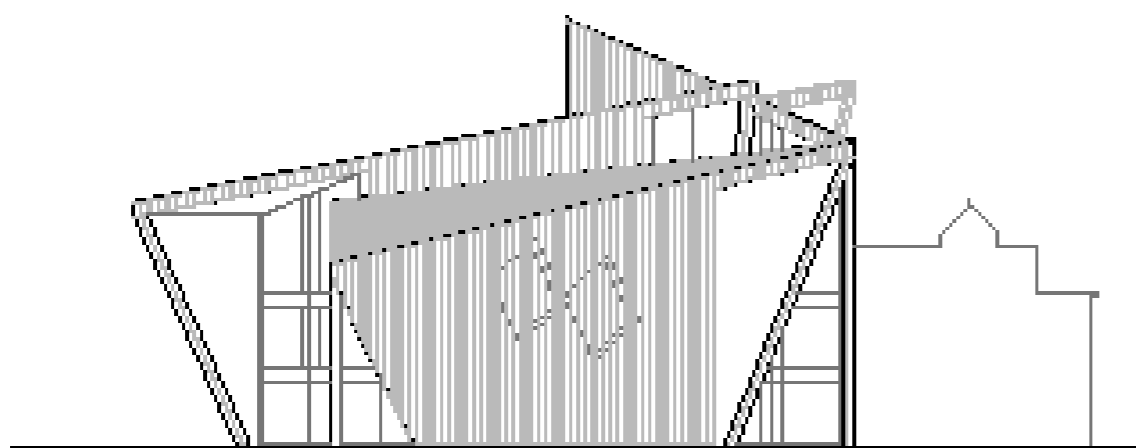
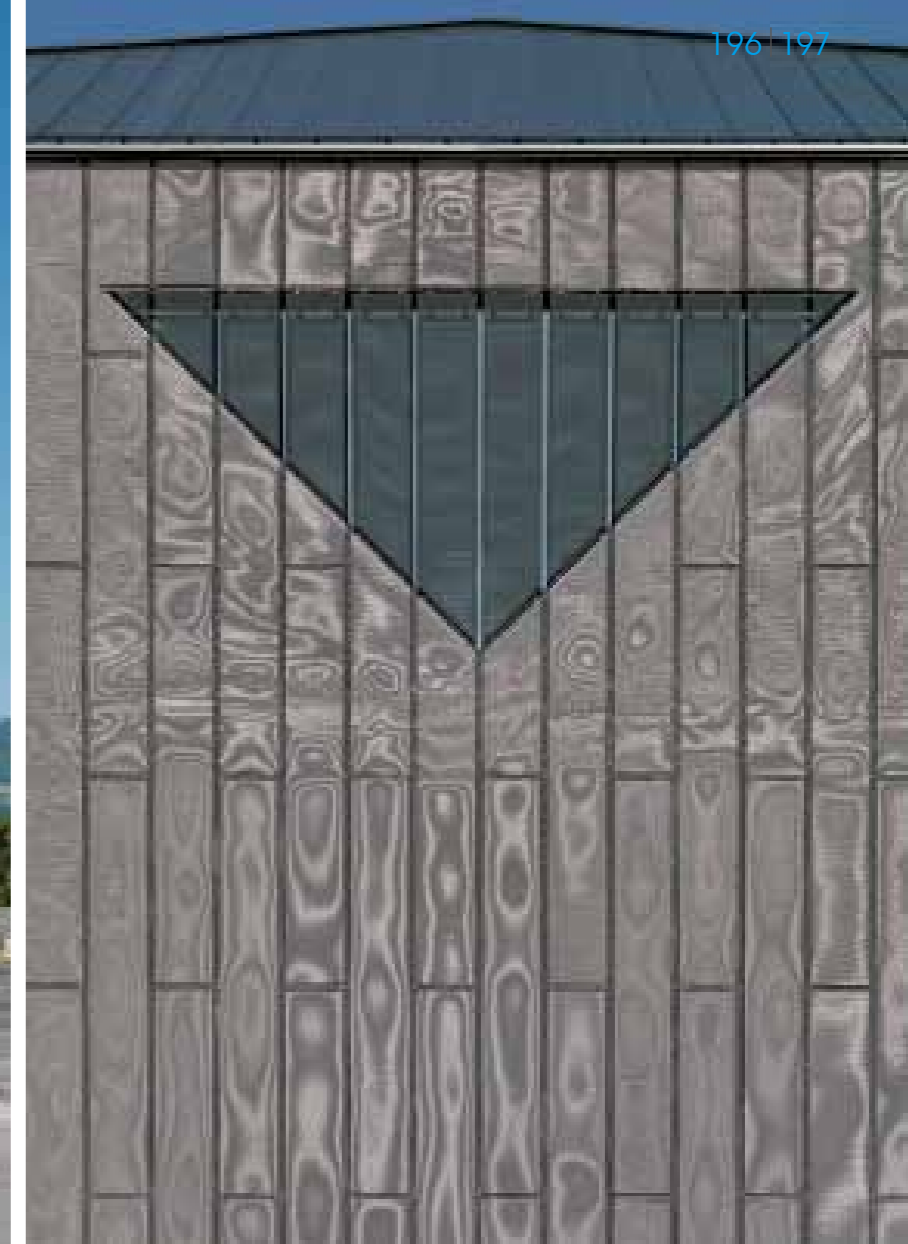
The building, a striking new addition to the skyline, is the link between the industrial area and the old town and takes its triangular forms from the traditional pitched roofs of Oberriet. The project integrates innovative technologies and includes new details and materials not yet used in architecture- the façade system for example, structural glazing details (by

本案是整个城市天际线中的耀眼新星，是工业区和旧城区的分界点和连接处。试想在一群以倾斜屋顶为特点的瑞士传统建筑群体中，其独特的三角体造型是多么与众不同。本案设计师结合创新技术，从局部细节到立面架构均采用了从未被使用过的新型材料，

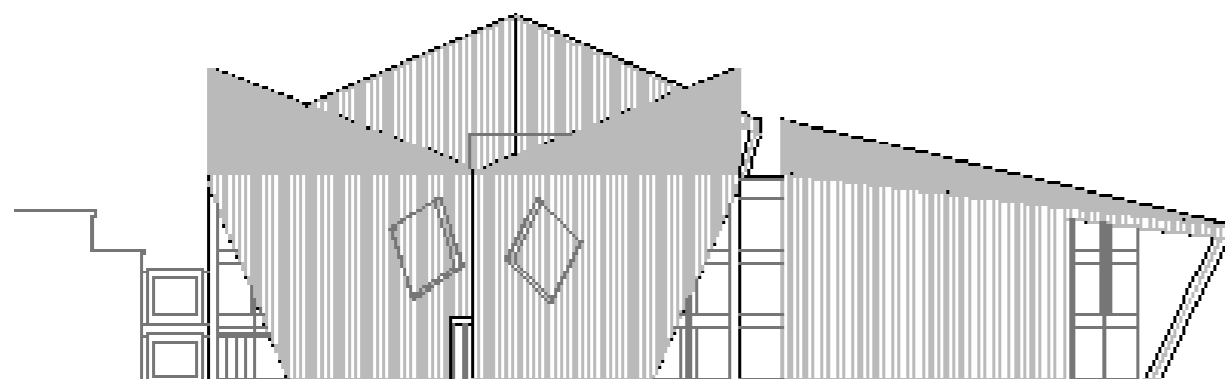
Jansen AG) and internal glazed fireproof doors. The building's heating, ventilation, lighting and energy consumption meets strict Swiss 'Minergie' standards, meaning that it has excellent sustainable credentials- the HV system, for example, is 'TAPS', activated by the structural shell of the building.

如结构型玻璃（由 Jansen AG 公司提供）和室内防火玻璃门。此外，建筑关于保温加热、通风排气、照明光效和能源消耗方面都按照瑞士“Minergie”的标准来设计，也就是说它采用了HV系统，具有较高的可持续性，就如本案的结构外壳，使得建筑更富有生命力。





North Elevation
北立面图



East Elevation
南立面图

SHAPE ANALYSIS 造型分析

PICTOGRAPHIC SHAPE

The new geometry of the Jansen Campus has been generated by this complexity of the "games of planes". It is typified by a multitude of different sized inclined planes, sloping in different directions, which manage to achieve a remarkable visual and spatial balance.

象形造型

复杂多变的“平面游戏”打造出极具创意的几何造型，大小不一的斜面朝向不尽相同的角度倾斜，呈现非一般的外观造型和不可思议的空间平衡感。

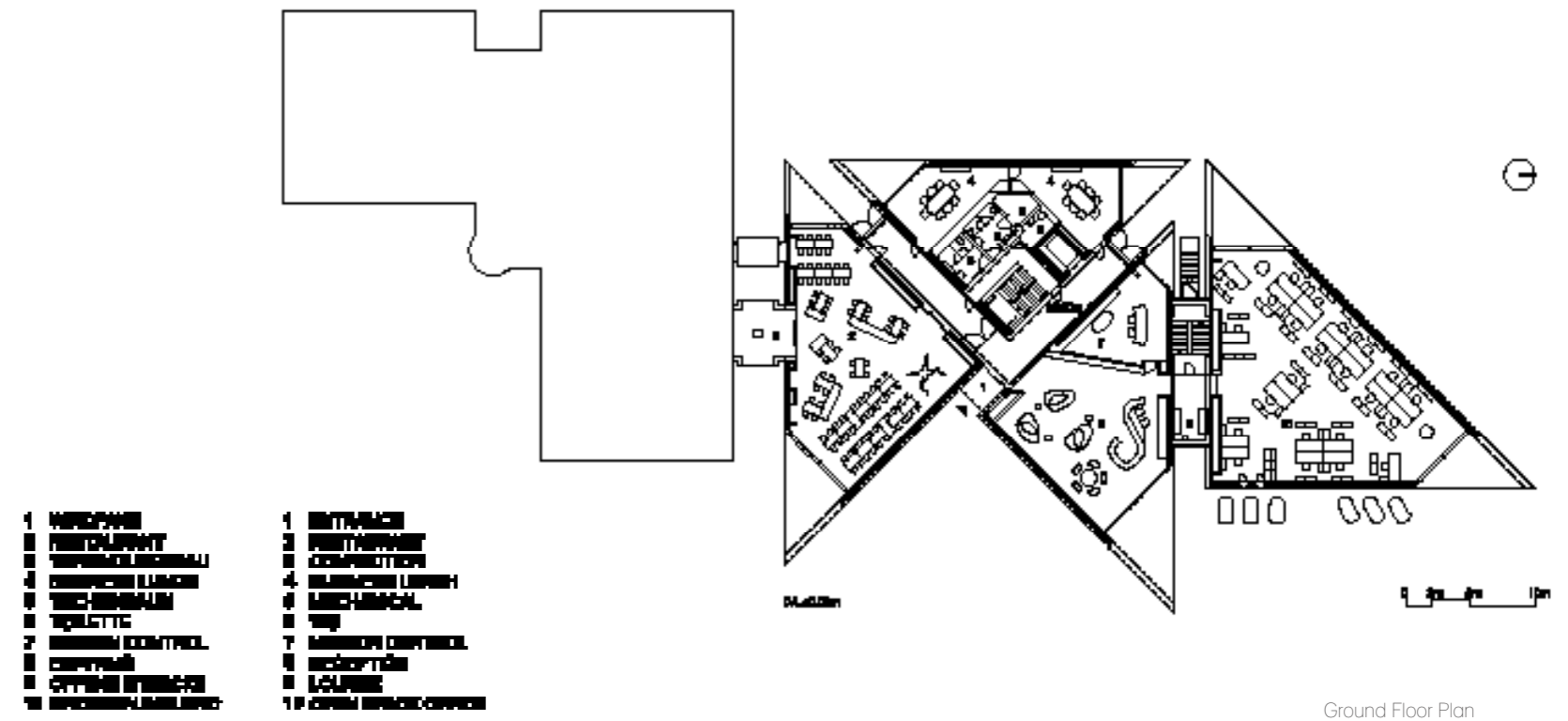
SKIN ANALYSIS 表皮分析

ENERGY SKIN

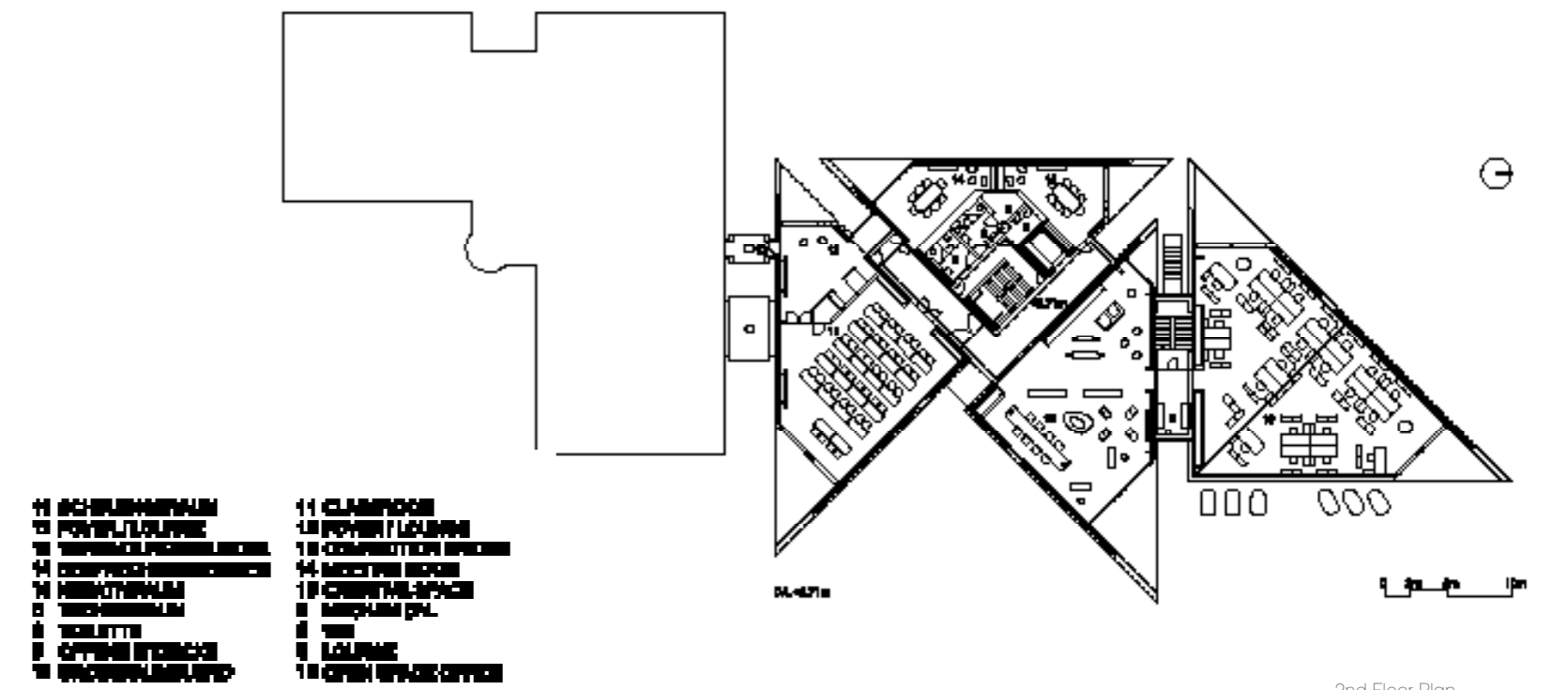
Epidermal structure of the building uses new materials that haven't been used in architecture before, such as an internal structure of glass and fireproof glass door, and in conformity with Switzerland "Minergie" standards.

节能表皮

本案外表皮运用了从未在其他建筑中使用过的最新材料，例如结构型玻璃和符合瑞士“Minergie”认证标准的室内防火玻璃门。



Ground Floor Plan
首层平面图



2nd Floor Plan
二层平面图

One of Jansen's main objectives for the project is to make the Campus a creative and engaging place for all their employees. The building's work spaces are open plan, with each employee have their own custom designed workstation. (Many furniture pieces have been custom designed and made for the project and stand alongside the chosen brands of Alias and Capellini). All spaces look out across the Rheintal and the geometry of the building means that visitors and employees alike are offered unexpected glimpses sliced out of the landscape. The landscaped park surrounding the building includes 80 trees, 35 different species representative of those of the region. The project also sees the beginning of the Jansen Art collection, containing works by international contemporary artists

本案其中一个主要规划目标就是打造一个能激发雇员活力、创造舒服环境的工作场所。（许多办公用具是两大品牌 Alias 和 Capellini 为本案服务的专属设计）。无论游客和雇员站在哪里，他们都能通过本案独特的三角造型，从任意空间里惊鸿一瞥那美丽的莱茵河。本案的周边公园种了 80 棵原生树木，其涵盖 35 个不同地区的树种。此外，本案作为詹森艺术收藏馆的一部分，届时将会展览出国际当代艺术家的作品。