







右頁：建築彷彿生長於地景中，曲折的輪廓有如浪潮掀起，難以一眼望盡



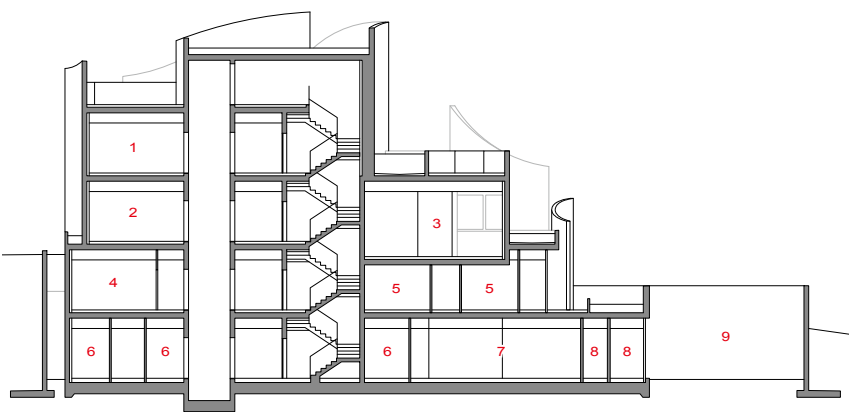
阿爾巴尼亞地拉那 動物醫院

## Vet Hospital, Tirana, Albania

達維德·馬庫洛建築師事務所

Davide Macullo Architects

主要建築師：達維德·馬庫洛  
 結構工程：雷札特·波加切  
 施工單位：Z. Pandi Carapuli, EUROCOL  
 建築面積：712平方公尺  
 主要材料：鋼筋混凝土、混凝土、PVC、石膏板、抗菌樹脂  
 座落位置：阿爾巴尼亞地拉那  
 影像：萊昂尼特·耶丁拉坎  
 文字：Davide Macullo 建築師事務所  
 採訪：蘇新寧  
 核稿：陳宗聲



- |           |                  |
|-----------|------------------|
| 1. 吧台・備餐區 | 1. bar · pantry  |
| 2. 寵物美容   | 2. grooming      |
| 3. 寵物用品店  | 3. pet shop      |
| 4. 手術室    | 4. surgery       |
| 5. 犬隻隔離區  | 5. dog isolation |
| 6. 犬隻旅館   | 6. dog hotel     |
| 7. 走廊     | 7. corridor      |
| 8. 犬隻旅館   | 8. dog hotel     |
| 9. 犬隻花園   | 9. dog garden    |

剖面圖 A-A' SECTION A-A'

Davide Macullo 建築師事務所認為，建築不僅是功能性結構，更應成為承載生命、文化與自然的場所，進而激發情感與思考、提升身心福祉。本案為一座位於阿爾巴尼亞的動物醫院，亦是該信念的具體實踐。

外觀流暢柔和，與清晰理性的內部動線相互呼應，創造出動靜平衡的氛圍。設計團隊以空間心理與人類學為基礎，將原本靜態的幾何結構，轉化為充滿生命力的曲線網絡，為接受治療的動物們打造開放、安全的醫療環境，避免場域過於封閉而加深就醫的恐懼感。此建築與自然共生，彷彿生長於地景中，曲折的輪廓如浪潮掀起，難以一眼望盡。屋頂與花園化作一片療癒的放鬆場所，讓動物能親近陽光、空氣與自然，加速身體康復。內部規劃充分考量動物的心理需求，將貓與狗的動線清楚區隔，並依照人類醫療場域的邏輯安排，滿足舒適性、安定性，以及隔離與共處的機制。

這座動物醫院不僅回應醫療需求，更象徵著阿爾巴尼亞建築文化的轉型。它抹去了既定的傳統風格，聚焦自然導向與人本思維，種下未來建築的種子，以服務、療癒與啟發為使命，創造充滿生機的空間。

Davide Macullo Architects believes that architecture is not merely about constructing functional structures—it is about creating meaningful places that resonate with life, culture, and nature. Architecture should evoke emotion, inspire reflection, and enhance the well-being of its inhabitants. This animal hospital embodies that philosophy in built form.

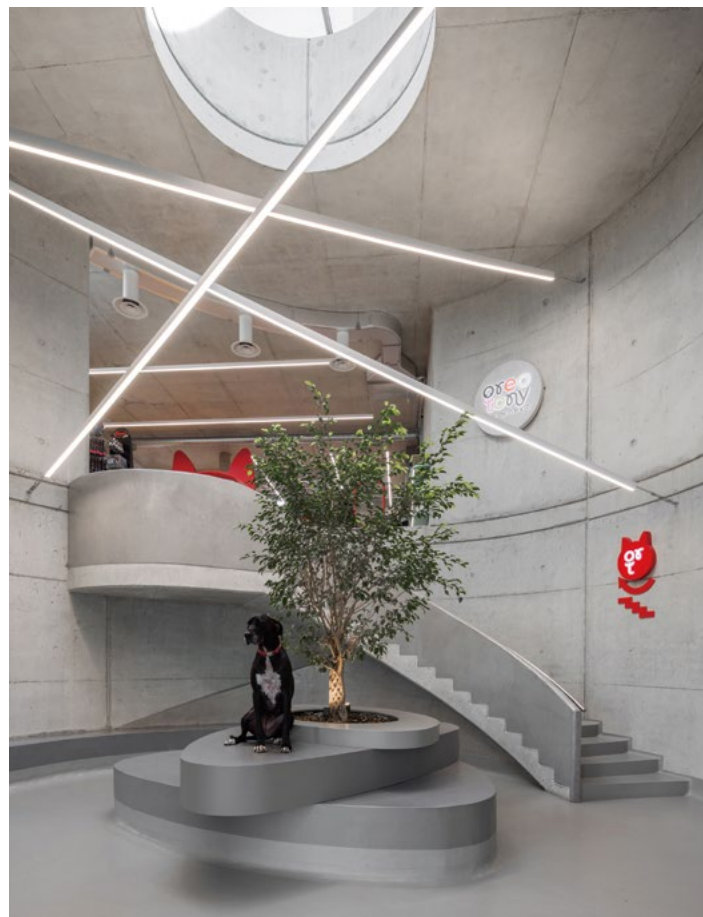
The building's soft, fluid exterior contrasts with its clear and rational internal layout, achieving a harmonious balance between movement and stillness. Grounded in principles of spatial psychology and anthropology, the design transforms static geometry into a dynamic network of curves, creating a space that feels alive. The flowing architecture helps reduce animals' instinctive fear of confinement, offering a sense of openness, safety, and calm.

This structure lives in symbiosis with the natural landscape, emerging from the earth like a sculptural wave. Its meandering form resists immediate comprehension, inviting exploration. The hospital itself is nearly invisible—more like a piece of living sculpture than a conventional medical facility—radiating joy, curiosity, and compassion. Rooftop terraces and gardens serve not merely as aesthetic elements, but as healing spaces that connect animals with sunlight, fresh air, and nature.

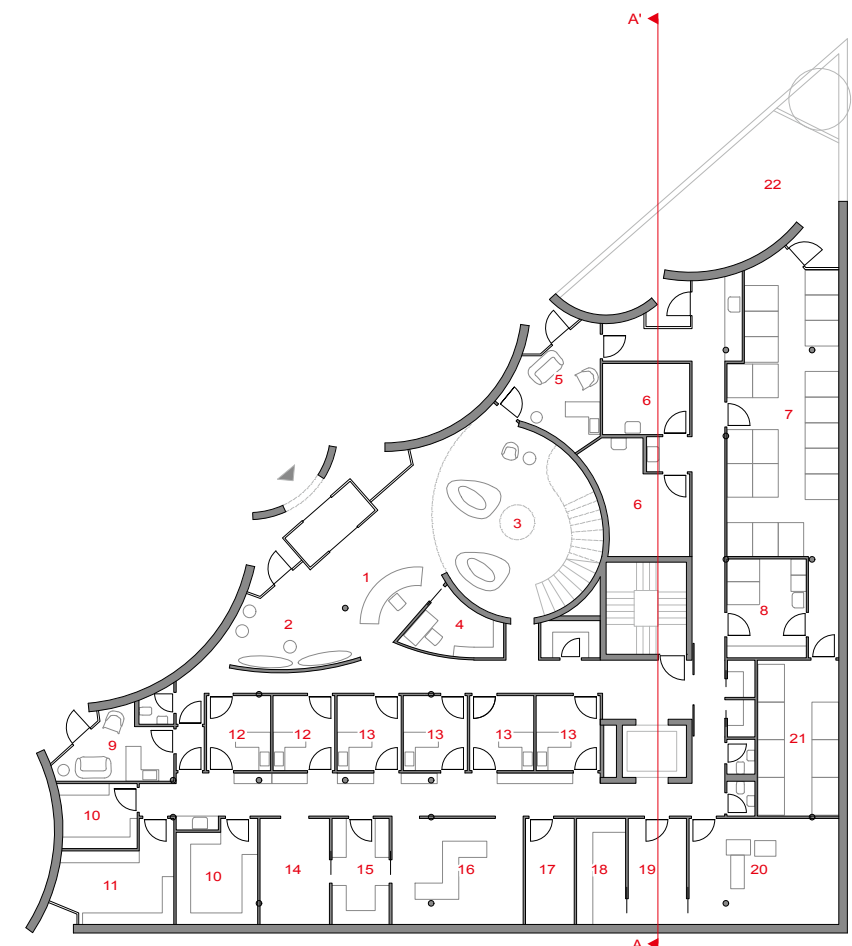
Inside, every detail is thoughtfully designed with animals' psychological needs in mind. Cats and dogs are guided along separate paths, following a logic similar to that of human healthcare environments: comfort, security, separation when necessary, and spaces that support calm cohabitation—ensuring a peaceful balance between species.

More than a veterinary facility, this building signals a shift in Albanian architectural culture. It moves away from rigid, doctrinal forms toward a more humanistic, nature-oriented approach. It plants a seed for the future—architecture that serves, heals, and inspires: architecture with soul.

左頁·右頁：本案為動物們打造開放、安全的醫療環境，避免場域過於封閉而加深就醫的恐懼感



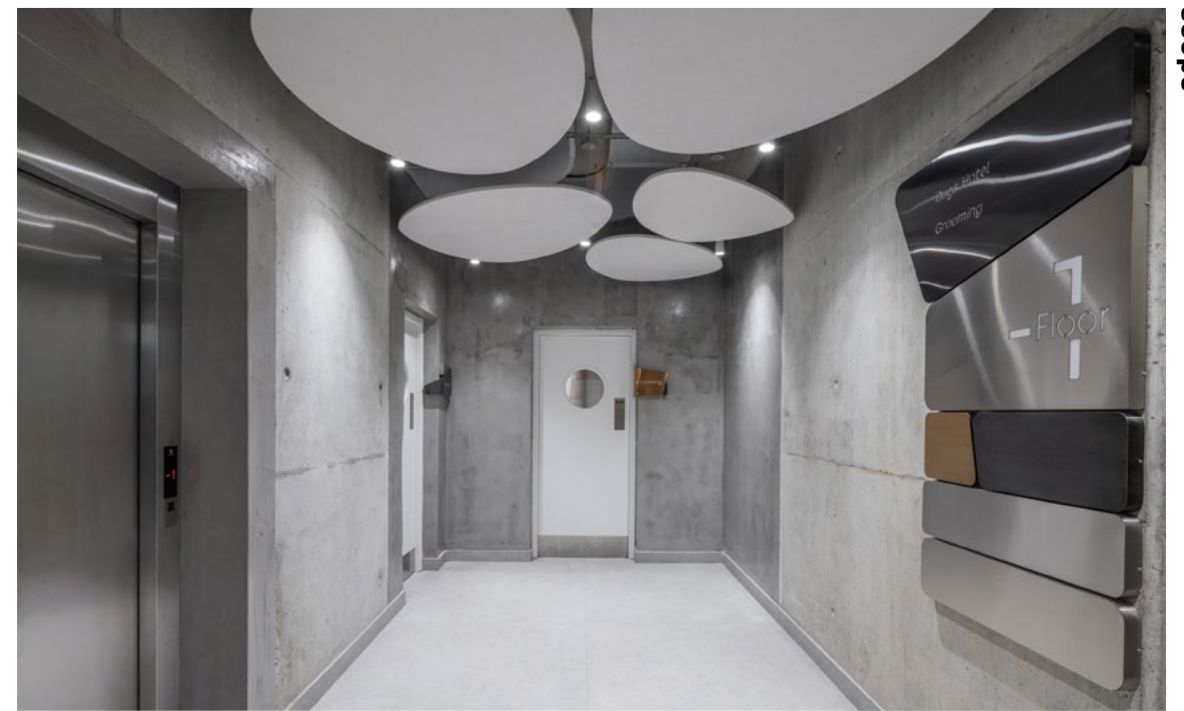
- |              |                           |
|--------------|---------------------------|
| 1. 接待區       | 1. reception              |
| 2. 貓等候區      | 2. cat waiting room       |
| 3. 狗等候區      | 3. dog waiting room       |
| 4. 辦公室       | 4. back office            |
| 5. 狗安撫室      | 5. dog comforting         |
| 6. 狗隔離室      | 6. dog isolation          |
| 7. 狗舍        | 7. kennels                |
| 8. 洗澡與餵食區    | 8. washing and feeding    |
| 9. 貓安撫室      | 9. cat comforting         |
| 10. 貓隔離室     | 10. cat isolation         |
| 11. 貓復甦室     | 11. cat reanimation       |
| 12. 貓診療室     | 12. cat examination       |
| 13. 狗診療室     | 13. dog examination       |
| 14. 貓治療室     | 14. cat treatment         |
| 15. 化驗室      | 15. laboratory            |
| 16. 治療室      | 16. treatment             |
| 17. X光室      | 17. x-ray                 |
| 18. 牙科       | 18. dentist               |
| 19. 手術準備·剃毛區 | 19. preparation · shaving |
| 20. 手術室      | 20. surgery               |
| 21. 復甦室      | 21. reanimation           |
| 22. 狗活動花園    | 22. dog garden            |



地面層平面圖 GROUND FLOOR PLAN



左頁·右頁：量體外觀流暢柔和，  
與清晰理性的內部動線相互呼應



scope

